

JABO SUPPLY



REPAIR CLAMPS



5 LOCATIONS

PARKERSBURG, WV
10085 Emerson Avenue 26102
(304) 464-4400

NORTON, VA
205 Hawthorne Drive, 24273
(276) 679-1224

HUNTINGTON, WV
209 Braley Street, 25705
(304) 736-8333

MORGANFIELD, KY
118 Jim Veatch Road, 42437
(270) 389-3430

BEAVER, WV (BECKLEY)
227 C&O Shop Road 25813
(304-252-0000

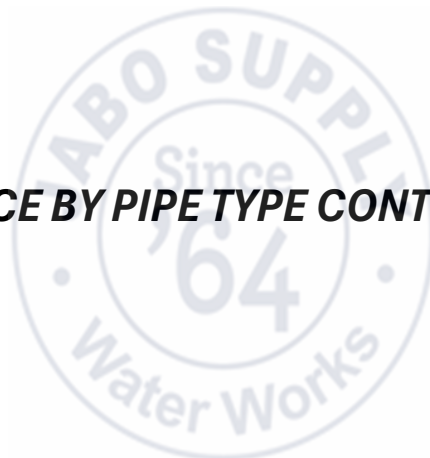
SINCE 1964 SERVICE IS MORE THAN A PROMISE

PREFIX

INDEX

DESCRIPTION	PAGE #
PICTURE INDEX	5-7
OD PIPE CHART	8
BY: PRODUCT / MANUFACTURE	
REDI / PATCH CLAMPS (SMALL DIA CLAMPS)	9-15
<i>Smith Blair 244 Full Circle Repair Clamp</i>	<i>10-11</i>
<i>Smith Blair 245 Redi Clamp</i>	<i>12-13</i>
<i>JCM 110 Patch Clamp</i>	<i>14-15</i>
FULL CIRCLE REPAIR CLAMPS	16-33
<i>Smith Blair 226 Single Band</i>	<i>17-18</i>
<i>JCM 101 Single Band</i>	<i>19-22</i>
<i>Smith Blair 227 Double Band</i>	<i>23-24</i>
<i>Smith Blair 228 Double & Triple Band for Larger Diameter Pipe</i>	<i>25-26</i>
<i>Smith Blair 261 All SS Fabricated Lugs Single Band</i>	<i>27-28</i>
<i>Dresser Quick Cam Repair Clamp Wide Range</i>	<i>29-33</i>
FULL CIRCLE REPAIR CLAMPS WITH OUTLETS (CC & NPT)	34-42
<i>Smith Blair 238 Single Band</i>	<i>35-38</i>
<i>Smith Blair 264 All Stainless Steel, Fabricated Lugs, Single Band</i>	<i>39-41</i>
<i>Dresser Quick Cam Repair Clamp with Outlet, Wide Range</i>	<i>42</i>
BELL JOINT LEAK CLAMPS	43-50
<i>Smith Blair 274 Bell Joint Leak Clamp</i>	<i>44-45</i>
<i>TPS Ultra Sleeve</i>	<i>46-50</i>
RACHET STRAP	51-52
<i>QFC Quick Fix Pipe Clamp</i>	<i>52</i>

QUICK REFERENCE BY PIPE TYPE CONTINUE ON NEXT PAGE



INDEX

QUICK REFERENCE GUIDE BY PIPE TYPE




DESCRIPTION	PAGE #
CTS PIPE REPAIR CLAMPS	53-54
<i>Smith Blair 244 Full Circle Repair Clamp</i>	54
IPS PIPE REPAIR CLAMPS	55-59
<i>Smith Blair 244 Full Circle Repair Clamp</i>	56
<i>Smith Blair 245 Redi Clamp</i>	56
<i>Smith Blair 226 Single Band</i>	57
<i>JCM 101 Single Band</i>	57
<i>Smith Blair 227 Double Band</i>	58
<i>Smith Blair 261 All SS Fabricated Lugs Single Band</i>	58
<i>Dresser Quick Cam Repair Clamp with Outlet, Wide Range</i>	59
DUCTILE IRON, C900, CAST IRON REPAIR CLAMPS	60-64
<i>Smith Blair 226 Single Band</i>	61
<i>Smith Blair 227 Double Band</i>	61
<i>Smith Blair 261 All SS Fabricated Lugs Single Band</i>	62
<i>Dresser Quick Cam Repair Clamp with Outlet, Wide Range</i>	62
<i>Smith Blair 274 Bell Joint Leak Clamp</i>	63
<i>TPS Ultra Sleeve</i>	64
PIT CAST PIPE REPAIR CLAMPS	65-67
<i>Smith Blair 226 Single Band</i>	66
<i>Smith Blair 261 All SS Fabricated Lugs Single Band</i>	66
<i>Dresser Quick Cam Repair Clamp with Outlet, Wide Range</i>	67
AC TRANSITE PIPE	68-74
Machine End Class 100 Pipe	69
Machine End Class 150 Pipe	70
Machine End Class 200 Pipe	71
Rough Barrell Cass 100 Pipe	72
Rough Barrell Cass 150 Pipe	73
Rough Barrell Cass 200 Pipe	74
AC SIMPLEX PIPE	75-81
Machine End Class 100 Pipe	76
Machine End Class 150 Pipe	77
Machine End Class 200 Pipe	78
Rough Barrell Cass 100 Pipe	79
Rough Barrell Cass 150 Pipe	80
Rough Barrell Cass 200 Pipe	81

PICTURE INDEX

PICTURE INDEX






BY PRODUCT


REDI CLAMPS / PATCH CLAMPS

SMITH BLAIR	SMITH BLAIR	JCM
244	245	110
		
PAGE 10-11	PAGE 12-13	PAGE 14-15



FULL CIRCLE REPAIR CLAMPS

Smith Blair	JCM	Smith Blair	Smith Blair	Smith Blair
226	110	227	228	261
				
PAGE 17-18	PAGE 19-22	PAGE 23-24	PAGE 25-26	PAGE 27-28

DRESSER/TPS
QCRS
WIDE RANGE

PAGE 29-33






PICTURE INDEX

PICTURE INDEX

PIPE BY INDIVIDUAL PRODUCTS



MATCH OD RANGE TO YOUR SPECIFIC NEED

FULL CIRCLE CLAMP WITH OUTLET

SMITH BLAIR	SMITH BLAIR	DRESSER/ TPS
238	264	QCRS
		
PAGE 35-38	PAGE 39-41	PAGE 42

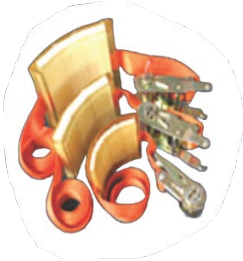


BELL JOINT LEAK CLAMPS

SMITH BLAIR	DRESSER / TPS
274	Ultra Sleeve
	
PAGE 44-45	PAGE 46-50



RACHETT STRAP CLAMP

Reparex

PAGE 52



PICTURE INDEX

PICTURE INDEX

REPAIR CLAMPS BY PIPE TYPE

IF PIPE IS KNOWN YOU CAN USE QUICK REFERENCE GUIDE TO FIND THE CLAMP THAT MATCHES YOUR SPECIFIC NEEDS

QUICK REFERENCE GUIDE FOR FOLLOWING PIPE TYPE

CTS	IPS PIPE	DUCTILE IRON C900 CAST IRON	PIT CAST	AC TRANSITE
<i>PAGE 53-54</i>	<i>PAGE 55-59</i>	<i>PAGE 60-64</i>	<i>PAGE 65-67</i>	<i>PAGE 68-74</i>

AC SIMPLEX
<i>PAGE 75-81</i>

OD CHART

OD PIPE CHART

FOR RECOMMENDATION ONLY

STEEL PIPE & STEEL SIZE PVC

SIZE	STD	IPS	SIZE	STD
INCHES	(SCH 40)		INCHES	(SCH 40)
1/2	0.84		4	4.50
3/4	1.05		4-1/2	5.00
1	1.32		5	5.56
1-1/4	1.66		6	6.63
1-1/2	1.90		8	8.63
2	2.38		9	9.63
2-1/2	2.88		10	10.75
3	3.50		12	12.75
3-1/2	4.00	14	14.00	

STD (SCH 40) STEEL PIPE 14" ABOVE THE NOMINAL SIZE IS THE O.D.) (16=16.00 OD ,,ETC

COPPER TUBING

SIZE	PIPE O.D.
INCHES	(INCHES)
3/8	0.56
1/2	0.63
5/8	0.75
3/4	0.88
1	1.13
1-1/4	1.38
1-1/2	1.63
2	2.13
2-1/2	2.63
3	3.13
4	4.13
5	5.13
6	6.13

DI, C900, CAST IRON

DI, C900, CAST IRON	
SIZE	PIPE O.D.
INCHES	INCHES
4	4.80
6	6.90
8	9.05
10	11.10
12	13.20
14	15.30

ASBESTOS PIPE 4-16"

SIZE	CLASS	AC TRANITE		AC SIMPLEX	
		MACHINE	RB	MACHINE	RB
		END	MIN-MAX	END	MIN-MAX
4	100	4.64	4.79-5.14	4.70	4.95
	150	4.81	4.97-5.27	4.85	5.10
	200	4.81	5.22-5.77	5.20	5.45
6	100	6.91	7.05-7.40	6.76	7.01
	150	6.91	7.07-7.37	6.95	7.20
	200	6.91	7.26-7.56	7.50	7.75
8	100	9.11	9.22-9.57	8.80	9.13
	150	9.11	9.27-9.57	9.15	9.40
	200	9.11	9.39-9.74	9.76	10.01
10	100	11.24	11.42-11.77	11.18	11.43
	150	11.66	11.82-12.12	11.70	11.95
	200	11.66	11.77-12.12	12.20	12.45
12	100	13.44	13.69-14.04	13.36	13.61
	150	13.92	14.08-14.38	13.96	14.21
	200	13.92	14.03-14.38	14.46	14.72
14	100	15.07	15.40-15.80	15.56	15.94
	150	16.22	16.38-16.73	16.26	16.64
	200	16.22	16.48-16.88	16.88	17.26
16	100	17.15	17.54-17.94	17.76	18.14
	150	18.46	18.62-18.97	18.50	18.88
	200	18.46	18.79-19.19	19.30	19.68

PIT CAST

PIT CAST PIPE ONLY			
SIZE	NOT CURRENT MANUFACTURE OR STD		
INCHES	CLASS A	CLASS B	CLASS C / D
3	3.8	3.96	3.96
4	4.8	5.00	5.00
6	6.9	7.10	7.10
8	9.05	9.05	9.30
10	11.1	11.10	11.40
12	13.2	13.20	13.50
14	15.3	15.30	15.65
16	17.4	17.40	17.80

ASBESTOS PIPE 18"

CLASS	AC TRANITE		AC SIMPLEX	
	ME	RB MIN-MAX	ME	RB MIN-MAX
100	19.90	20.44	NA	NA
150	20.94	21.20	NA	NA
200	NA	NA	NA	NA

ASBESTOS PIPE 20"				
100	21.12	22.5	NA	NA
150	23.28	23.54	NA	NA
200	NA	NA	NA	NA

JABO SUPPLY DOES NOT WARRANTY OR GUARANTEE MANUFACTURED PIPE SIZES



REDI / PATCH CLAMPS BY PRODUCT



REDI / PATCH CLAMPS



Full Circle® Redi-Clamp

244

IMPORTANT LINKS

Click appropriate words to go to:

[Standard Limited Warranty](#)
[Sales Terms & Conditions](#)
[Freight Policy](#)
[Returns Policy](#)
[Corrosion & Product Selection Notice](#)



THIS PRODUCT DOES NOT RESTRAIN PIPE MOVEMENT. Proper anchoring is required to prevent pipe pullout. Failure to anchor or improper anchoring can result in dangerous pipe content escape, property damage, serious injury, or death. Read the product installation instructions prior to installing this product.

Description: A repair clamp designed to repair pin holes, punctures or splits.

Application: Works on Steel, Copper, IPS-sized PVC and HDPE.

Key Features:

- Built to a specific pipe O.D.
- Smooth ¼" thick gasket material
- Drop-in bolts help ease installation
- Standard widths are 3", 6" and 12"
- Available in IPS and Copper tube sizes
- Lugs are epoxy coated for great corrosion resistance
- Provides 360° coverage, covering the full pipe surface
- Use 6" long or longer clamps to join pipe ends of like size
- 18-8 Type 304 Stainless Steel band for corrosion resistance
- Economical means of repairing pin hole leaks, punctures and splits in pipe

Materials Specifications (subject to change):

BAND: Stainless Steel Type 304

LUGS: Ductile Iron ASTM A536

GASKET: Nitrile (Buna N) compounded to produce resist oil, natural gas, acids, alkalies, most (aliphatic) hydrocarbon fluids, water and many chemicals

LUGS: Ductile Iron ASTM A536 with Flexi-Coat® Epoxy Finish

BOLTS: Carbon Steel SAE J 429 electro galvanized with di-chromate seal. *Optional: 304 Stainless Steel bolts with fluoropolymer coated nuts to prevent galling*

Working Pressure: Up to 150 PSI

Pipe Applications: Steel Copper, and IPS-sized PVC and HDPE

Sizes (in inches): 1/2", 3/4", 1", 1 ¼", 1 ½" and 2"

REDI / PATCH CLAMPS

REDI CLAMP / PATCH CLAMP

244 FULL CIRCLE REDI REPAIR CLAMP



FULL CIRCLE

ELECTRO GALVANIZED BOLTS STD
SS BOLTS AVAILABLE UPON REQUEST



SIZE INCHES	OD RANGE	PIPE	LENGTH		
			3	6	12
1/2"	0.63	CTS	073-07746	073-07754	NA
	.84	IPS	073-07762	073-07770	*
3/4"	0.88	CTS	073-07786	073-07794	NA
	1.05	IPS	073-07802	073-07810	*
1"	1.13	CTS	073-07826	073-07834	NA
	1.32	IPS	073-07842	073-07850	073-07858
1 1/4"	1.38	CTS	073-07866	073-07874	NA
	1.66	IPS	073-07898	073-07906	073-07914
1-1/2"	1.63	CTS	073-07882	073-07890	NA
	1.90	IPS	073-07922	073-07930	073-07938
2"	2.13	CTS	073-07946	073-07954	NA
	2.38	IPS	074-07962	073-07970	073-07978

REDI / PATCH CLAMPS



Redi-Clamp®

245

IMPORTANT LINKS

Click appropriate words to go to:

[Standard Limited Warranty](#)
[Sales Terms & Conditions](#)
[Freight Policy](#)
[Returns Policy](#)
[Corrosion & Product Selection Notice](#)



THIS PRODUCT DOES NOT RESTRAIN PIPE MOVEMENT. Proper anchoring is required to prevent pipe pullout. Failure to anchor or improper anchoring can result in dangerous pipe content escape, property damage, serious injury, or death. Read the product installation instructions prior to installing this product.

Description: A repair clamp designed to repair pin holes, punctures or splits.

Application: Works on Steel, PVC, HDPE, and Copper tube.

Key Features:

- Built to a specific pipe O.D.
- Drop-in bolts help ease installation
- Standard widths are 3", 6", 9" and 12"
- Available in IPS, Copper tube, Ductile Iron and other sizes
- Lugs are epoxy coated for great corrosion resistance
- Provides 360° coverage, covering the full pipe surface
- 18-8 Type 304 Stainless Steel band for corrosion resistance
- Economical means of repairing pin hole leaks, punctures and splits in pipe

Materials Specifications (subject to change):

BAND: Stainless Steel Type 304

LUGS: Ductile Iron ASTM A536

GASKET: Nitrile (Buna N) compounded to produce resist oil, natural gas, acids, alkalies, most (aliphatic) hydrocarbon, water and many chemicals

LUGS: Ductile Iron ASTM A536 with Flexi-Coat® Epoxy Finish

BOLTS: Carbon Steel SAE J 429 electro galvanized with di-chromate seal. *Optional: 304 Stainless Steel bolts with fluoropolymer coated nuts to prevent galling*

Working Pressure: Up to 150 PSI

Pipe Applications: Steel, PVC, HDPE, and Copper tube

Sizes (in inches): ½", ¾", 1", 1¼", 1½", 2", 2½", 3" and 3½"-4"

REDI / PATCH CLAMPS

REDI CLAMP / PATCH CLAMP*245 REDI CLAMP NOT FULL CIRCLE***NO FULL CIRCLE**

ELECTRO GALVANIZED BOLTS STD

SS BOLTS AVAILABLE UPON REQUEST

245 NOT AVAILABLE FOR CTS (SEE JCM)



SIZE (INCHES)	OD RANGE (INCHES)	SIZE (INCHES) W/ LOW ALLOY BOLTS & NUTS			
		3	6	9	12
1/2	0.84		073-07994	NA	NA
3/4	1.05	073-08002	073-08010	NA	NA
1	1.32	073-08018	073-08026	NA	NA
1-1/4	1.66	073-08034	073-08042	NA	NA
1-1/2	1.90	073-08050	073-08058	NA	NA
2	2.0			NA	NA
2	2.38	073-08082	073-08090	*	*
2-1/2	2.88	073-08114	073-08122	*	*
3	3.0	*	*	*	*
	3.50	073-08178	073-08186	*	*
3-1/2-4	4.00	*	*	*	*
4	4.25	*	*	*	*
	4.50	073-08258	073-08266	073-08274	*
5	5.00	*	*	*	*
	5.56	*	073-08326	*	*
6	6.00	*	*	*	*
	6.25	*	*	*	*
	6.63	073-08386	073-08394	073-08402	073-08410
8	8.00	*	*	*	*
	8.63	073-08458	*	073-08466	*
10	10.00	*	*	*	*
	10.75	*	*	073-08518	*
12	12.00	*	*	*	*
	12.75	*	*	*	*

JCM 110 PATCH CLAMPS

JCM Patch Clamps are designed with a partial gasket for fast, economical repairs for pinholes, punctures, splits or corrosion areas on steel and PVC pipelines. Partial gasket creates a "patch area" applied directly over the damage. Stainless steel band conforms to the pipe circumference with bolt torque applied directly to spot gasket sealing.

Sizes 2" - 12". For larger sizes, see JCM 112 - 113 Heavy Duty Patch Clamps

Standard clamp furnished with Buna-N Gasket. Other gaskets available include: Viton, EPDM, Hypalon.



JCM 110 PATCH CLAMP

Lug: Ductile Iron ASTM A-536. Optional CF8 Stainless Steel available.

Gasket: Rubber gasket, suitable for gas.

Band: 18-8 Type 304 Stainless Steel

Hardware: Electro-galvanized steel. Optional Stainless Steel available



REDI / PATCH CLAMPS

REDI CLAMP / PATCH CLAMP

JCM 110 PATCH CLAMP NOT FULL CIRCLE

110 PATCH CLAMP NOT FULL CIRCLE

SIZE (INCHES)	OD RANGE (INCHES)	SIZE (INCHES) W/ LOW ALLOY BOLTS & NUTS			
		3	6	9	12
1/2	0.63	*	*	NA	NA
	0.84	*	071-00200	NA	NA
3/4	0.88	*		NA	NA
	1.05	071-00010	071-00210	NA	NA
1	1.13	*		NA	NA
	1.32	071-00020	071-00220	NA	NA
1-1/4	1.38	*		NA	NA
	1.66	071-00030	071-00230	NA	NA
1-1/2	1.63	*		NA	NA
	1.90	071-00040	071-00240	NA	NA
2	2.13	*		NA	NA
	2.38	071-00050	071-00250	*	*
2-1/2	2.88	071-00060	071-00260	*	*
3	3.50	071-00070	071-00270	*	*
4	4.50	071-00090	071-00290	*	*
5	5.56	*	071-00300	*	*
6	6.63	071-00110	071-00310	071-00390	071-00315
8	8.63	*	071-00320	071-00400	*
10	10.75	*	*	071-00410	*
12	12.75	*	*	*	*

FULL CIRCLE REPAIR CLAMPS

BY PRODUCT



FULL CIRCLE REPAIR CLAMPS



Full Circle[®] Repair Clamp

Single Band

226



Description: These clamps provide fast, economical means for repairing full circumferential breaks, holes, cracks and other types of damage.

Application: Works on Cast Iron, Ductile Iron, Steel, Asbestos Cement, Copper, Aluminum, PVC, HDPE, Fiberglass and other pipe types.

Key Features:

- Stainless Steel bands
- Working pressure up to 300 PSI
- Nominal temperature range -20°F to 180°F
- Removable lugs to allow installation in tight spaces
- May be used to join plain end pipe of the same diameter
- Standard widths through 30"
- 360° gasket seal
- Flexi-Coat[®] Epoxy Finish for corrosion resistance
- Range up to .40" in single band
- Drop-in bolts for easier installation

Materials Specifications (subject to change):

BAND: Stainless Steel Type 304

LUGS: Ductile Iron ASTM A536, 80-55-06

GASKET: Nitrile (Buna N) compounded to produce superior storage and performance characteristics, while resisting water, acids, alkalis, most (aliphatic) hydrocarbons and many other chemicals
Temperature Range: -20°F to 180°F. Consult manufacturer for specific applications and other service temperatures

BRIDGE PLATE: Stainless Steel recessed flush and bonded into gasket

BOLTS: High strength, low alloy Steel with heavy, semi-finished hexagon nuts per ANSI B.18.2.2

Optional 304 Stainless bolts with fluoropolymer coated nuts to reduce galling

FINISH: Flexi-Coat[®] Fusion Bonded Epoxy

NOTE: Also available in metric sizes. HDPE applications will require clamps with spring washers

Pipe Applications: Cast Iron, Ductile Iron, Steel, Asbestos Cement, Copper, Aluminum, PVC, HDPE, Fiberglass and other pipe types

Sizes (in inches): 2, 2 ¼-2 ½, 3, 3-4, 4, 4-5, 6, 8, 8-10, 10, 10-12, 12, 12-14



THIS PRODUCT DOES NOT RESTRAIN PIPE MOVEMENT. Proper anchoring is required to prevent pipe pullout. Failure to anchor or improper anchoring can result in dangerous pipe content escape, property damage, serious injury, or death. Read the product installation instructions prior to installing this product.

FULL CIRCLE REPAIR CLAMPS

FULL CIRCLE REPAIR CLAMP

226 FULL CIRCLE REPAIR CLAMP SINGLE BAND



SIZE (INCHES)	OD RANGE (INCHES)	SIZE (INCHES) W/ LOW ALLOY BOLTS & NUTS						
		7.5	10	12.5	15	20	24	30
2	2.35-2.63	073-01622	073-01630	073-01638	073-01646	NA	NA	NA
2 1/4-2 1/2	2.70-3.00	073-01654	*	*	8	NA	NA	NA
3	2.97-3.25	*	*	*	*	NA	NA	NA
	3.46-3.70	073-01718	*	073-01734	073-01742	NA	NA	NA
3-4	3.73-4.00	*	*	*	*			
	3.96-4.25	*	*	*	*	NA	NA	NA
4	4.45-4.73	073-01814	073-01822	073-01830	073-01838	NA	NA	NA
4	4.74-5.14				073-01870	073-01878	*	*
4-5	4.95-5.35	073-01902	073-01910	073-01918	073-01926	073-01934	*	*
	5.22-5.62	*	*	*	*	*	*	*
6	5.95-6.35	*	*	*	*	*	*	*
	6.56-6.96	073-02066	073-02074	073-02082	073-02090	073-02098	*	*
	6.84-7.24	073-02122	073-02130	073-02138	073-02146	073-02154	*	*
	7.05-7.45	073-02178	073-02186	073-02194	073-02202	073-02210		
	7.45-7.85	*	*	*	*	*	*	*
8	7.95-8.35	*	*	*	*	*	*	*
	8.54-8.94	073-02346	073-02354	073-02362	073-02370	073-02378	*	*
	8.99-9.39	073-02402	073-02410	073-02418	073-02426	073-02434	*	*
	9.27-9.67	073-02458	073-02466	073-02474	073-02482	073-02490	*	*
8-10	9.70-10.10	*	*	*	*	*	*	*
10	10.64-11.04	073-02566	073-02574	073-02582	073-02590	073-02598	*	*
	11.04-11.44	073-02622	073-02630	073-02638	073-02646	073-02654	*	*
	11.34-11.74	073-02678	073-02686	073-02694	073-02702	073-02710	*	*
	11.75-12.15	073-02734	073-02742	073-02750	073-02758	073-02766	*	*
10-12	12.00-12.40	*	*	*	*	*	*	*
12	12.62-13.02	073-02846	073-02854	073-02862	073-02870	073-02878	*	*
	13.10-13.50	073-02902	073-02910	073-02918	073-02926	073-02934	*	*
	13.40-13.80							
12-14	13.70-14.10	073-03014	073-03022	073-03030	073-03038	073-03046	073-03054	
12	14.00-14.40	073-03074	073-03082	073-03090	073-03098	073-03106		

* NON STOCK CALL JABO SUPPLY

ABOVE CLAMPS / LOW ALLOY BOLTS & NUTS

STAINLESS STEEL BOLTS & NUTS ARE AVAILABLE UPON REQUEST

FULL CIRCLE REPAIR CLAMPS

JCM 101 UNIVERSAL CLAMP COUPLINGS JCM 171 UNIVERSAL CLAMP COUPLINGS REMOVEABLE LUGS Single Band, Ductile Iron Lugs

Corrosion resistant, high strength low alloy bolts and nuts (AWWA C-111, ANSI A21.11.) are standard. Optional 18-8 Type 304 Stainless Steel available. Drop-in bolts means no loose parts.

Meets ANSI/AWWA C230 Stainless-Steel Full- Encirclement Repair and Service Connection Clamps.

Low profile Ductile Iron lugs (ASTM A536) with mutually supporting sliding fingers provide distortion free tightening over wide range.

Model 101 Positive attachment of band to lugs eliminates mechanical weaknesses and band pull-out.

Model 171 Removeable lugs eases installation in tight spaces.

Type 304 Stainless Steel band conforms to pipe irregularities maintaining sealing pressure for entire gasket.

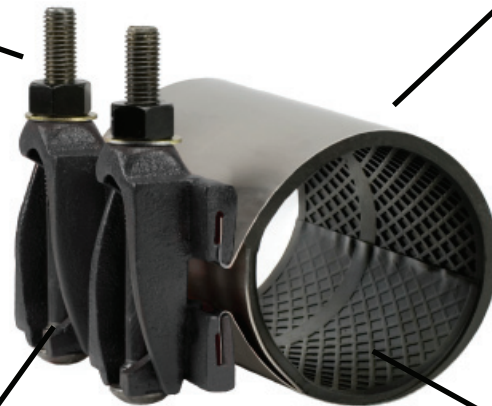


Image Reflects 6" Clamp Width

Gridded gasket with long tapered ends and recessed bridge plate assures even gasket pressure throughout range - without wrinkling or crimping. Compounded for use with water, salt solutions, mild acids and bases.

JCM 101 Universal Clamp Couplings meet all Three R's

Robust, Reliable and Ready!

FULL CIRCLE REPAIR CLAMPS

JCM Universal Clamp Couplings Selection

Industry standard repair clamps require bolt torque ranges between 60 - 85 ft. lbs. of torque. Some manufacturers advise not to exceed 75 ft. lbs. of torque due to excessive lug deformation. Difficult installations involving pipe offset or deflection often require more torque to assure proper clamp conformation to the pipe and high gasket compression. Larger pipe sizes and pipelines with higher working pressures also require greater torque capability. JCM Universal Clamp Couplings have bolt torque capability in excess of 100 ft. lbs. on 5/8" bolts and 150 ft. lbs. on 3/4" bolts. These elevated torque value capabilities allow JCM Universal Clamp Couplings to go beyond the "standard installation".

As an added PLUS, JCM Universal Clamp Couplings come standard with a thicker gasket in all but the smallest sizes. This heavy 1/4" thick gasket was introduced to the industry to provide for better performance on heavily damaged and pitted pipe. However, it had been available in only 10" and 12" clamp sizes. In JCM clamps this heavier gasket is standard in all sizes 3" and larger. Combined with the **greater bolt torque capability**, the heavy gasket feature means more clamp capability under extreme conditions.

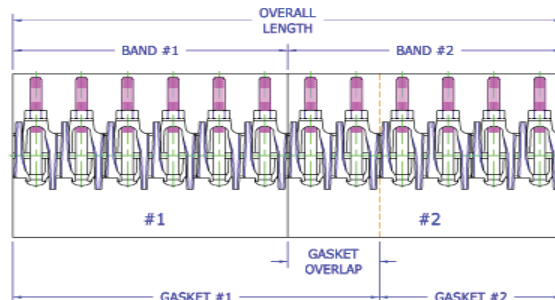
Width Selection - 101, 102, 171, 172 Universal Clamp Couplings

JCM Universal Clamp Couplings are available in a great many widths. Because these clamps utilize a heavier gasket and bolting arrangement than most comparable clamps, when you use JCM Universal Clamp Couplings significant savings are possible. The following general recommendations are offered to assist you in taking advantage of the design benefits of these clamps. Specific circumstance may require widths other than these general recommendations.

- 6" Width:** Best and most economical width to repair most beam breaks and to connect pipe in sizes 4" and smaller. Short length with thicker gasket give outstanding deflection capability. Recommend 2" of gasket on both sides of the break.
- 7-1/2" Width:** Best for Asbestos Cement coupling replacements, beam breaks and connection of pipe in sizes 6" and larger.
- 12" Width:** Best for longer breaks, repairs on working pressure above 150 PSI and for larger sizes of pipe.
- 15, 18, 24, 30" and longer widths:** Best for long splits and heavily damaged pipe. For best performance the separation between pipe ends should be no more than 1/4". If the space is larger, or a large hole is being repaired, use a sheet of stainless steel over the hole under the gasket or a spacer to fill gap between pipe ends.

JCM Multi-Segment Clamps for Extended Width Clamps

JCM clamps with widths greater than 48" are often provided as multi-segmented clamps which install in an overlapping band/gasket design. The gasket in the first section extends out from the band. The next section clamp has the gasket offset in the clamp, the second band butts up to the first band and covers the extended gasket and the additional sections continue with the offset assembly. The last band segment has a gasket flush with the stainless band, providing the last segment of the clamp. This overlapping band design allows for nearly unlimited clamp widths, ensures safe, damage free transport on common carriers and hot shot service, eases installation for a small number of crew members, provides for direct tightening of bolt sections over the gasket.



FULL CIRCLE REPAIR CLAMPS

JCM Universal Clamp Couplings - Single Band

JCM Universal Clamp Couplings provide a full circumferential seal and wide range for the permanent repair or reconnection of Asbestos-Cement, Cast Iron, Ductile Iron, PVC, Steel, HDPE and other types of pipe.

JCM 101 Series Universal Clamp Couplings

- **Balanced, Low Profile Ductile Iron lugs (ASTM A536)** with mutually supporting sliding fingers provide distortion free tightening over a wide range. Ductile Iron lugs offer corrosion resistance and an efficient method of transfer of energy from the fastener attachment directly to compression of the gasket.
- **Corrosion Resistant Type 304 Stainless Steel Band** conforms to pipe irregularities, maintains sealing pressure over the entire gasket area. Design criteria requires gauge thickness increase with clamp size. This is just one of the design points which enables JCM Universal Clamp Couplings to withstand the internal forces involved with large pipe repair.
- **Positive Attachment** of stainless band to lugs is a structurally sound fabrication design element which accommodates the greater torque capabilities ensuring permanent repairs on high pressure applications.
- **Gridded Gasket** with long tapered ends and recessed bridge plate assures even gasket pressure through out the range - without wrinkling or crimping. **Diamond gridded, 1/4" thick gasket** (JCM standard on nominal sizes 4" and larger) adapt to pitted or uneven pipe surfaces to completely seal damaged areas. Standard gasket is compounded for use with water, salt solutions, mild acids, bases and sewage. Other gasket compounds for exotic line contents are available.
- **Larger Bolts** for greater torque ratings are provided on 10" clamps and larger. The 3/4" bolts have bolt torque capability in excess of 100 ft. lbs. These higher torque value capabilities allow JCM Universal Clamp Couplings to go beyond the "standard installation."

JCM 170 Series Universal Clamp Coupling with Removeable Lug System

- **Features an Easy to Remove Lug** - simply slide the open ear lug section off the stainless band receiver pleat, install the clamp around the pipe and slide the lug back into place. A simple transfer of bolt torque energy from the bolt to the stainless steel band locks the lug into place and prevents band pull out.
- **Full Line of Diameters and Widths** - JCM 170 Series is available in the exact sizes and ranges as the JCM Models 101, 102, 103 and 104 have the same great availability. Single band, multi-band and tapped outlets are readily available.

JCM 170 Series with Removeable Lug Overcomes common installation problems such as:

**Cramped Underground Utility Applications
Rockbound Soil Conditions
Restricted, Narrow Space Piping Galleries
Limited Excavation Applications**

MATERIAL SPECIFICATIONS - JCM Universal Clamp Couplings - Models 101, 102, 171, 172

- Band:** 18-8 Type 304 Certifiable Prime Stainless Steel
- Lugs:** Ductile Iron ASTM A-536, 60-40-18
- Bolts:** Corrosion resistant low alloy per ASTM A242, ANSI A21.11, AWWA C-111. National coarse rolled thread and heavy hex nut.
Optional Stainless Steel 18-8 Type 304 or 316 available.
Optional Electro Coated low alloy bolts/nuts available.
- Gasket:** Virgin Styrene-Butadiene Rubber (SBR) - Compounded for use with water, salt solutions, mild acids and bases. Per ASTM D-2000 M4AA 607. Standard temperature range from -40° to 150° F (-40° to 65° C) constant, maximum intermittent 180° F (82° C). For applications on high temperatures or chemical pipelines, contact JCM Industries Technical Services.
- Coating:** Corrosion resistant shop coat paint primer.
- Pressure Rating:** Pressure holding capabilities vary according to application.
For specific pressure ratings, contact JCM Industries Technical Services.

Meets ANSI/AWWA C230 Stainless-Steel Full-Encirclement Repair and Service Connection Clamps as applicable.
JCM 100 Series Universal Clamp Couplings are ANSI/NSF Standard 61, Annex G and ANSI/NSF 372 Certified.



FULL CIRCLE REPAIR CLAMPS

FULL CIRCLE REPAIR CLAMP

JCM FULL CIRCLE REPAIR CLAMP SINGLE BAND

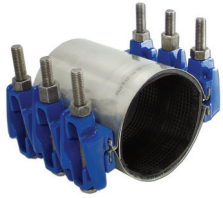


SIZE (INCHES)	OD RANGE (INCHES)	SIZE (INCHES)						
		6"	7	12'	15	18	24	30
1-1/2	1.88 - 2.15	*	*	*	*	*	*	*
2	2.35-2.63	*	*	*	*	*	*	*
2 1/4-2 1/2	2.70-3.13	*	*	*	*	*	*	*
3	3.46-3.70	071-00545	071-00540	071-00543	*	*	*	*
3-4	3.73-4.13	*	*	*	*	*	*	*
4	4.45-4.73	071-00548	071-00550	071-00560	071-00562	*	*	*
4	4.74-5.14	*	*	*	*	*	*	*
4-5	5.22 - 5.62	*	*	071-00570	*	*	*	*
6	5.95-6.35	*	*	*	*	*	*	*
6	6.56-6.96	*	071-00575	071-00580	071-00582	*	*	*
6	6.85-7.25	*	*	*	*	*	*	*
6	7.05-7.45	*	*	*	*	*	*	*
8	7.45-7.85	*	*	*	*	*	*	*
8	7.95-8.35	*	*	*	*	*	*	*
8	8.54-8.94	*	*	071-00600	071-00602	*	*	*
8	8.99-9.39	*	*	071-00740		*	*	*
8	9.27-9.67	*	*			*	*	*
10	10.60-11.00	*	*	071-00620	071-00626	*	*	*
10	11.04-11.44	*	*	*	*	*	*	*
10	11.34-11.74	*	*	*	*	*	*	*
10	11.75-12.15	*	*	*	*	*	*	*
10-12	12.00-12.40	*	*	*	*	*	*	*
12	12.60-13.02	*	*	071-00680		*	*	*
12	13.10-13.50	*	*	*	*	*	*	*
12-14	13.70-14.10	*	*	*	*	*	*	*
14	14.00-14.40	*	*	071-00692	*	*	*	*

* NON STOCK CALL JABO SUPPLY

AVAILABLE OPTIONS
Stainless Steel Bolts
Conductive Buttons
Specialty Gaskets
Tapped Outlets
Other Sizes and Ranges

FULL CIRCLE REPAIR CLAMPS



Full Circle[®] Repair Clamp

Double Band

227

IMPORTANT LINKS

Click appropriate words to go to:

- Standard Limited Warranty
- Sales Terms & Conditions
- Freight Policy
- Returns Policy
- Corrosion & Product Selection Notice



THIS PRODUCT DOES NOT RESTRAIN PIPE MOVEMENT. Proper anchoring is required to prevent pipe pullout. Failure to anchor or improper anchoring can result in dangerous pipe content escape, property damage, serious injury, or death. Read the product installation instructions prior to installing this product.

Description: These clamps provide fast, economical means for repairing full circumferential breaks, holes, cracks and other types of damage.

Application: Works on Cast and Ductile Iron, Steel, Asbestos Cement, Copper, Aluminum, PVC, HDPE, Fiberglass and other pipe types.

Key Features:

- Working pressure up to 175 PSI
- Nominal temperature range -20°F to 180°F
- Removable lugs to allow installation in tight spaces
- May be used to join plain end pipe of the same diameter
- Standard widths through 30" (221 standard is 5")
- 360° gasket seal
- Flexi-Coat[®] Epoxy Finish for corrosion resistance
- Range up to .80" in double band
- Drop-in bolts for easier installation

Materials Specifications (subject to change):

Band: Stainless Steel Type 304

Lugs: Ductile Iron ASTM A536, 80-55-06

Gasket: Nitrile (Buna N) compounded to produce superior storage and performance characteristics, while resisting water, acids, alkalis, most (aliphatic) hydrocarbon and many other chemicals

Temperature Range: -20°F to 180°F. Consult manufacturer for specific applications and other service temperatures

Bridge Plate: 304 Stainless Steel recessed flush and bonded into gasket

Bolts: High strength, low alloy Steel with heavy, semi-finished hexagon nuts per ANSI B. 18.2.2

Optional 304 Stainless bolts with fluoropolymer coated nuts to reduce galling

FINISH: Flexi-Coat[®] Fusion Bonded Epoxy

NOTE: Also available in metric sizes. HDPE applications will require clamps with spring washers

Pipe Applications: Cast Iron, Ductile Iron, Steel, Asbestos Cement, Copper, Aluminum, PVC, HDPE, Fiberglass and other pipe types

Sizes (in inches): 3, 4, 6, 8, 10, 12. Other sizes available upon request.

Bolt Numbers:

BAND WIDTH INCHES	NUMBER OF BOLTS	BOLT SIZES
7.5	6	Drop-In lug 5/8"x6" or 16mmx152mm
10	8	
12.5	10	
15	12	Closed lug 5/8"x6 7/8" or 16mmx175mm
20	16	
30	24	

FULL CIRCLE REPAIR CLAMPS

FULL CIRCLE REPAIR CLAMP

227 FULL CIRCLE REPAIR CLAMP DOUBLE BAND



SIZE (INCHES)	OD RANGE (INCHES)	SIZE (INCHES) W/ LOW ALLOY BOLTS & NUTS						
		7.5	10	12.5	15	20	24	30
3	3.49-4.29	*	*	NA	*	*	*	*
4	4.44-5.24	NA	*	NA	*	*	*	*
	4.74-5.57	NA	*	NA	*	*	*	*
6	6.62-7.42	NA	*	NA	*	*	*	*
	6.84-7.64	NA	*	NA	*	*	*	*
8	8.62-9.42	NA	*	NA	*	*	*	*
	8.99-9.79	NA	*	NA	*	*	*	*
10	10.75-11.55	NA	*	NA	*	*	*	*
	11.10-11.90	NA	*	NA	*	*	*	*
10	11.60-12.40	NA	*	NA	*	*	*	*
12	12.75-13.55	NA	*	NA	*	*	*	*
	13.20-14.00	NA	*	NA	*	*	*	*
	13.14-14.34	NA	*	NA	*	*	*	*
	13.65-14.45	NA	*	NA	*	*	*	*
	13.65-14.85	NA	*	NA	*	*	*	*

* NON STOCK CALL JABO SUPPLY

ABOVE CLAMPS W/ LOW ALLOY BOLTS & NUTS

STAINLESS STEEL BOLTS & NUTS ARE AVAILABLE UPON REQUEST

OTHER SIZES ARE AVAILABLE UPON REQUEST

FULL CIRCLE REPAIR CLAMPS



Full Circle® Repair Clamp

Double Band and Triple Band

(FOR LARGE DIAMETER PIPE)

228

IMPORTANT LINKS

Click appropriate words to go to:

[Standard Limited Warranty](#)

[Sales Terms & Conditions](#)

[Freight Policy](#)

[Returns Policy](#)

[Corrosion & Product Selection Notice](#)



THIS PRODUCT DOES NOT RESTRAIN PIPE MOVEMENT. Proper anchoring is required to prevent pipe pullout. Failure to anchor or improper anchoring can result in dangerous pipe content escape, property damage, serious injury, or death. Read the product installation instructions prior to installing this product.

Description: These clamps provide fast, economical means for repairing full circumferential breaks, holes, cracks and other types of breaks.

Application: Works on Cast Iron, Ductile Iron, Steel, Asbestos Cement, Copper, Aluminum, PVC, HDPE, Fiberglass and other pipe types.

Key Features:

- Stainless Steel bands
- Working pressure up to 150 PSI
- Nominal temperature range -20°F to 180°F
- Removable lugs to allow installation in tight spaces
- 18-8 Type 304 Stainless Steel band for corrosion resistance
- 360° gasket seal
- Flexi-Coat® Epoxy Finish for corrosion resistance
- Drop-in bolts for easier installation

Materials Specifications (subject to change):

BAND: Stainless Steel Type 304

LUGS: Ductile Iron ASTM A536, 80-55-06

GASKET: Nitrile (Buna N) compounded to produce superior storage and performance characteristics, while resisting water, acids, alkalis, most (aliphatic) hydrocarbon and many other chemicals

Temperature Range: -20°F to 180°F. Consult manufacturer for specific applications and other service temperatures

BRIDGE PLATE: 304 Stainless Steel recessed flush and bonded into gasket

BOLTS: High strength, low alloy Steel with heavy, semi-finished hexagon nuts per ANSI B. 18.2.2

Optional 304 Stainless bolts with fluoropolymer coated nuts to reduce galling

FINISH: Flexi-Coat® Fusion Bonded Epoxy

NOTE: Also available in metric sizes. HDPE applications will require clamps with spring washers

Pipe Applications: Cast Iron, Ductile Iron, Steel, Asbestos Cement, Copper, Aluminum, PVC, HDPE, Fiberglass and other pipe types

Sizes (in inches): 14, 16, 18, 20, 24. Other sizes available upon request.

FULL CIRCLE REPAIR CLAMPS

FULL CIRCLE REPAIR CLAMP

228 FULL CIRCLE REPAIR CLAMP LARGE DIAMETER



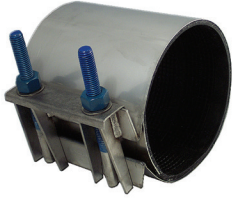
SIZE	OD RANGE	SIZE (INCHES) W/ LOW ALLOY BOLTS & NUTS						
(INCHES)	(INCHES)	7.5	10	12.5	15	20	24	30
DOUBLE BAND	14.38 - 15.13	*	*	*	*	*	*	*
	15.07 - 15.82	*	*	*	*	073-03714	*	*
	15.92 - 16.67	*	*	*	073-03738	073-03743	*	*
	16.56 - 17.31	*	*	*	*	*	*	*
	17.15 - 17.90	*	*	*	*	*	*	*
	17.82 - 18.57	*	*	*	*	073-03802	*	*
	18.46 - 19.21	*	*	*	*	*	*	*
	19.23 - 19.98	*	*	*	*	*	*	*
	19.90 - 20.65	*	*	*	*	*	*	*
	20.70 - 21.45	*	*	*	*	*	*	*
	21.52 - 22.27	*	*	*	*	*	*	*
	22.12 - 22.87	*	*	*	*	*	*	*
	22.90 - 23.65	*	*	*	*	*	*	*
TRIPLE BAND	23.28 - 24.38	*	*	*	*	*	*	*
	24.38 - 25.48	*	*	*	*	*	*	*
	25.70 - 26.80	*	*	*	*	*	*	*
	26.48 - 27.58	*	*	*	*	*	*	*
	27.65 - 28.75	*	*	*	*	*	*	*
	28.73 - 29.83	*	*	*	*	*	*	*
	29.62 - 30.72	*	*	*	*	*	*	*

*** NON STOCK CALL JABO SUPPLY**

ABOVE CLAMPS / LOW ALLOY BOLTS & NUTS

STAINLESS STEEL BOLTS & NUTS ARE AVAILABLE UPON REQUEST

FULL CIRCLE REPAIR CLAMPS



Full Circle® Repair Clamp

All Stainless Steel, Fabricated Lugs, Single Band

261

IMPORTANT LINKS

Click appropriate words to go to:

[Standard Limited Warranty](#)

[Sales Terms & Conditions](#)

[Freight Policy](#)

[Returns Policy](#)

[Corrosion & Product Selection Notice](#)



THIS PRODUCT DOES NOT RESTRAIN PIPE MOVEMENT. Proper anchoring is required to prevent pipe pullout. Failure to anchor or improper anchoring can result in dangerous pipe content escape, property damage, serious injury, or death. Read the product installation instructions prior to installing this product.

Description: A single-band clamp designed to provide 360° pressure and complete leak repair

Application: Works on Cast Iron, Ductile Iron, Steel, Asbestos Cement, Copper, Aluminum, PVC, HDPE, Fiberglass and other pipe types.

Key Features:

- Designed with "hot" soils in mind
- Standard widths 7.5" through 30"
- Can be used to repair pipe or join pipe ends
- Can be manufactured to odd size pipe O.D.'s
- All 304 Stainless Steel construction for corrosion resistance
- A 360° Gasket seal provides maximum support and reinforcement
- Keeper bar helps pull clamp around the pipe and closes the clamp during installation
- Range up to .40"
- Larger clamps have a greater range to help reduce inventory

Materials Specifications (subject to change):

BAND: Stainless Steel (Type 304)

LUGS: Stainless Steel (Type 304)

KEEPER BARS: Stainless Steel (Type 304)

GASKET: Nitrile (Buna N) to produce superior storage and performance characteristics while resisting water, acids, alkalies, most aliphatic hydrocarbon and other chemicals.

Temperature Range: -20°F to +180°F

BRIDGE PLATE: 304 Stainless Steel recessed flush and bonded to gasket

STUD BOLTS: Type 304 Stainless Steel Epoxy coated

NUTS: fluoropolymer coated to prevent galling

Also in metric sizes. HDPE applications require clamps with spring washers

Working Pressure: Up to 150 PSI

Pipe Applications:

Cast Iron, Ductile Iron, Asbestos Cement, PVC, HDPE, Steel, Copper, Fiberglass and other types of pipes

Sizes (in inches): 2, 2¼-2½, 3, 4, 4-5, 6, 8, 10, 12

FULL CIRCLE REPAIR CLAMPS

FULL CIRCLE REPAIR CLAMP

261 ALL STAINLESS STEEL, FABRICATED LUGS, SINGLE BAND



SIZE (INCHES)	OD RANGE (INCHES)	SIZE (INCHES) W/ LOW ALLOY BOLTS & NUTS						
		7.5	10	12.5	15	20	24	30
2	2.35-2.63	*	*	*	*	NA	NA	NA
2 1/4-2 1/2	2.70-3.00	*	*	*	*	NA	NA	NA
3	2.97-3.25	*	*	*	*	NA	NA	NA
	3.46-3.70	*	*	*	*	NA	NA	NA
3-4	3.73-4.00	*	*	*	*	NA	NA	NA
	3.96-4.25	*	*	*	*	NA	NA	NA
4	4.45-4.73	073-09310	*	073-09318	*	NA	NA	NA
4	4.74-5.14	073-09326	*	*	*	*	NA	NA
4-5	4.95-5.35	*	*	*	*	*	NA	NA
	5.22-5.62	*	*	073-09340	*	*	NA	NA
6	5.95-6.35	*	*		*	*	NA	NA
	6.56-6.96	073-09398	*	073-09406	*	*	*	*
	6.84-7.24	073-09426	*	073-09434	*	*	*	*
	7.05-7.45	073-09400	*	*	*	*	*	*
	7.45-7.85	*	*	*	*	*	*	*
8	7.95-8.35	*	*	*	*	*	*	*
	8.54-8.94	073-09534	*	073-09542	*	*	*	*
	8.99-9.39	073-09562	*	073-09570	*	*	*	*
	9.27-9.67	*	*	*	*	*	*	*
8-10	9.70-10.10	*	*	*	*	*	*	*
10	10.64-11.04	*	*	073-09654	*	*	*	*
	11.04-11.44	*	*	073-09682	*	*	*	*
	11.34-11.74	*	*	*	*	*	*	*
	11.75-12.15	*	*	*	*	*	*	*
10-12	12.00-12.40	*	*	*	*	*	*	*
12	12.62-13.02	*	*	*	*	*	*	*
	13.10-13.50	*	*	*	*	*	*	*
	13.40-13.80	*	*	*	*	*	*	*

* NON STOCK CALL JABO SUPPLY

ABOVE CLAMPS W/ LOW ALLOY BOLTS & NUTS

STAINLESS STEEL BOLTS & NUTS ARE AVAILABLE UPON REQUEST



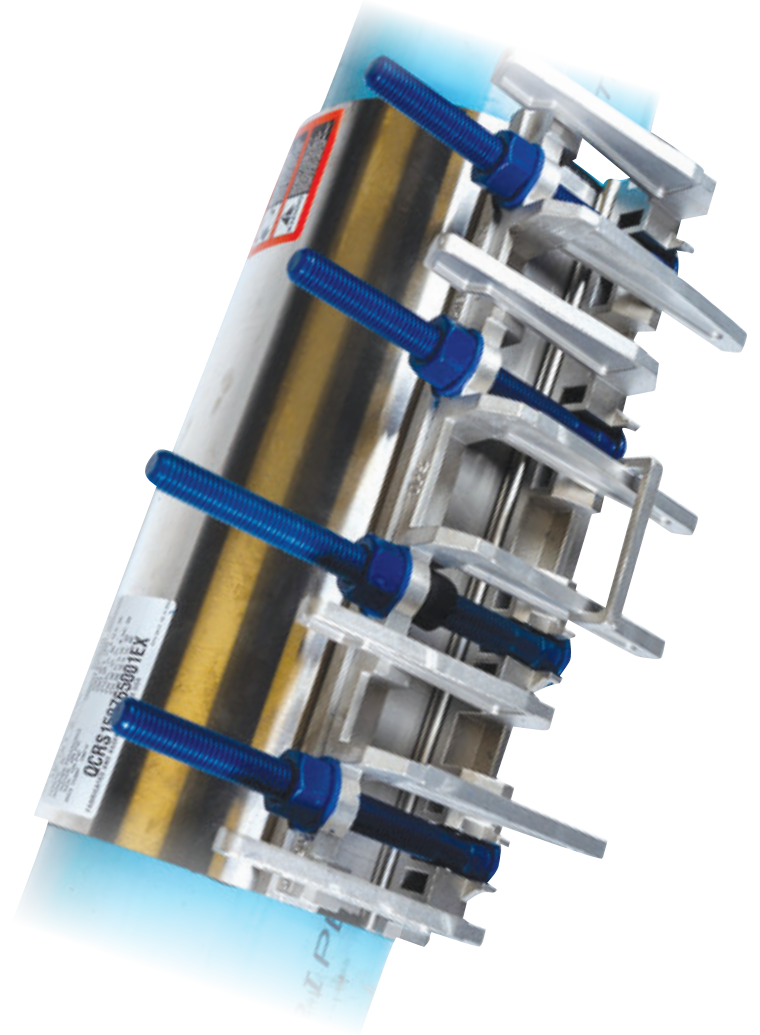
Quick-Cam[®] Repair Clamp

Double-Range Pipe Repair Clamp

Integrated handle for ease of handling
Semi-fixed bolts for trouble-free tightening

Patented gasket design seals under full or
reduced line pressure conditions

Wide range pipe coverage up to 0.9" repairs nearly
any type of pipe with one clamp



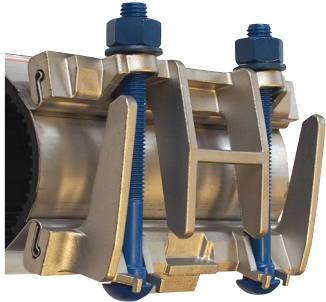
water & industrial

FULL CIRCLE REPAIR CLAMPS

Quick Cam® Extended Range Clamp

Saves Time, Labor and Inventory Dollars

The Quick-Cam Repair Clamp features an industry leading range of fit 0.9" per clamp, allowing a substantial reduction in inventory taking the guess work out of sizes needed on your shelf. Our patented gasket seal system provides a seal under full or reduced pressure pipelines, and is ideal for repairing breaks, holes and splits in water, wastewater, and sewer lines.



Integrated Handle for Ease of Installation

- » All stainless steel construction or with epoxy coated ductile iron lugs
- » Available with CC or NPT outlets which utilize a T-drill process optimizing the strength of the joint of the outlet to the stainless-steel band
- » 360° seal on all common pipe materials including: Steel, Ductile Iron, Cast Iron, PVC, Asbestos Cement, and HDPE (SDR17 or thicker wall)



Quick-Cam Repair Clamps available in all stainless steel or optional E-Coated ductile iron lug system

Technical Details

Pressure Rating: Up to 200 psi maximum working pressures, up to 300 test pressure

Range: up to 0.9" range of fit per clamp

Temperature Rating: Up to 180°F

Gaskets: NSF-61/372 Approved NBR Rubber

Shell: Heavy Duty Gauge 18-8 Stainless Steel

Alignment Lugs: Heavy Duty ASTM A351 CF8 Grade 304 Cast or Optional Heavy Duty E-Coated ASTM A-536 Ductile Iron

Spanner Plate: Heavy Duty Gauge 18-8 Stainless Steel integral with gasket

Hardware: 304 Stainless Steel nuts, bolts and washers double coated with a Fluoropolymer coating to prevent galling. Optional Carbon Steel nuts and bolts (coated or bare) available for use with ductile iron lug system

Outlets: Outlet clamps with 1/2" - 2" NPT or CC Threads available

Pipe Line Content: Water and Sewerage *Pressure Rating up to 200 psi, hydrostatically tested up to 300 psi. Natural Gas *Pressure Rating up to 125 psi, pressure tested up to 190 psi up to 12" diameters only

Testing: Quick-Cam Repair Clamps are tested for 360° seal per AWWA C-230-16. The test is completed on a simulated 360° beam break test performed at 1.5 times the rated pressure on a test pipe designed with a 1/8" by 3/16" deep hydrostatically pressurized groove

Features:

- » Up to 0.9" range per single panel clamp
- » Up to 1.9" of range for double panel clamps
- » Patented Cam Lug system with integrated handle
- » Slide on- slide off lugs to ease installation with space limitations
- » Patented seal bead geometry with an o-ring seal bead system with deep mat gasket
- » Double o-ring seal under bridge plate provides best in class sealing capabilities
- » Non-Welded Lug to Band Attachment Design Reduces Corrosion Potential
- » Suitable for use on water, sewer, natural gas, and other petroleum based line contents.
- » Meets or exceed AWWA C-230 test requirements

NOTE: Product pressure rating, temperature rating and bolt torque can vary depending on the product diameter, type of connection, and the pipe material being utilized.

** Pressure rating, temperature rating, and bolt torque shown on the product label are the actual ratings of the individual product.*

FULL CIRCLE REPAIR CLAMPS

Quick Cam Extended Range:

	Nominal Dia.	Extended Range (in.)	Widths	Range Repairs Pipe Diameters
Single Panel	3"	3.46-4.26	7-1/2, 10, 12, 15, 20, 24, 30"	CTS, IPS, DIP, PVC Pit Cast, AC 100/150/200
	4"	4.45-5.13	7-1/2, 10, 12, 15, 20, 24, 30, 48"	CTS, IPS, DIP, PVC Pit Cast
	4" o.s.	4.74-5.61	7-1/2, 10, 12, 15, 20, 24, 30, 48"	CTS, IPS, DIP, PVC Pit Cast, AC 100/150/200
	5"	5.50-6.20	7-1/2, 10, 12, 15, 20, 24, 30, 48"	PVC IPS, CTS
	6"	6.55-7.42	7-1/2, 10, 12, 15, 20, 24, 30, 48"	IPS, DIP, PVC Pit Cast, AC 100/150
	6" o.s.	6.84-7.65	7-1/2, 10, 12, 15, 20, 24, 30, 48"	DIP, PVC DIP, Pit Cast, AC 100/150/200
	8"	8.54-9.44	7-1/2, 10, 12, 15, 20, 24, 30, 48"	IPS, DIP, PVC DIP, Pit Cast
	8" o.s.	8.98-9.84	7-1/2, 10, 12, 15, 20, 24, 30, 48"	DIP, PVC DIP, Pit Cast, AC 100/150/200
	10"	10.64-11.46	10, 12, 15, 20, 24, 30, 48"	IPS, DIP, PVC Pit Cast
	10" o.s.	11.34-12.16	10, 12, 15, 20, 24, 30, 48"	Pit Cast, AC 100/150/200
	12"	12.62-13.56	10, 12, 15, 20, 24, 30, 48"	IPS, DIP, PVC, Pit Cast
	12" o.s.	13.65-14.42	10, 12, 15, 20, 24, 30, 48"	IPS, PVC IPS, AC 100/150/200
Double Panel Ranges		14.75-16.24	12, 15, 20, 24, 30, 36, 48"	IPS, PVC IPS, Pit Cast, AC 100
		15.87-17.37	12, 15, 20, 24, 30, 36, 48"	AC 150/200
		16.80-18.30	12, 15, 20, 24, 30, 36, 48"	IPS, DIP, PVC, Pit Cast, AC 100
		17.92-19.42	12, 15, 20, 24, 30, 36, 48"	AC 150/200
		18.88-20.35	12, 15, 20, 24, 30, 36, 48"	IPS, DIP, PVC, Pit Cast, AC 100/150/200
		19.89-21.38	12, 15, 20, 24, 30, 36, 48"	AC 150/200
		20.99-22.49	12, 15, 20, 24, 30, 36, 48"	DIP, PVC DIP, Pit Cast, AC 100/150/200
		21.87-23.36	12, 15, 20, 24, 30, 36, 48"	Pit Cast, AC 100/200
		22.65-24.15	12, 15, 20, 24, 30, 36, 48"	AC 150
		23.27-24.77	12, 15, 20, 24, 30, 36, 48"	IPS, PVC IPS, AC 200
		24.94-26.43	12, 15, 20, 24, 30, 36, 48"	DIP, PVC DIP, Pit Cast
	25.88-27.38	12, 15, 20, 24, 30, 36, 48"	Pit Cast, AC 100	
Triple Panel Ranges		27.45-29.70	12, 15, 20, 24, 30, 36, 48"	AC 150
		29.03-31.28	12, 15, 20, 24, 30, 36, 48"	IPS, PVC IPS, AC 200
		31.79-34.03	12, 15, 20, 24, 30, 36, 48"	DIP, PVC DIP
		35.42-37.66	12, 15, 20, 24, 30, 36, 48"	IPS, PVC IPS
		36.84-39.08	12, 15, 20, 24, 30, 36, 48"	DIP, PVC DIP
Four Panel Range		43.68-46.67	12, 15, 20, 24, 30, 36, 48"	DIP, PVC DIP
		48.98-51.97	12, 15, 20, 24, 30, 36, 48"	DIP, PVC DIP
Five Panel Range		56.99-60.73	12, 15, 20, 24, 30, 36, 48"	DIP, PVC DIP

Note: Contact factory for clamp sizes not shown on this chart

Note: Pressure rating and bolt torque shown on product label are actual rating

FULL CIRCLE REPAIR CLAMPS

Quick Cam® RR (Regular Range) Repair Clamp

Technical Details

Pressure Rating: Up to 150 psi maximum working pressure

Temperature Rating: Up to 180°F

Gasketing: NSF 61 approved SBR Rubber approved for water and sewer service

Spanner Plate: Heavy Gauge 18-8 stainless steel

Lug Material: Type 304, 18-8 stainless steel or E-Coated Ductile Iron

Shell Material: Heavy Gauge Type 304, 18-8 stainless steel

Available Widths: 7.5, 10, 12, 15, 20, and 24" widths

Hardware: 304 Stainless steel Bolts and Washers with heavy double coated or coated carbon steel available upon request

Testing: per AWWA C-230-16 on a full 360-degree beam break

Outlets: Available in ½" to 2" NPT or CC threads

Note: Pressure, temperature and bolt torque can vary depending upon the product diameter, pipe material and type of connection.

Note: Always refer to instructions on product label. Repair Clamps must not be re-used until refurbished with new bolts and gaskets at the factory.

Caution: Quick-Cam RR is not to be used on HDPE Pipe Material.

Nominal Dia.	Regular Range (in)	Widths	Range Repairs Pipe Diameter
2"	2.35-2.65		IPS, IPS, Pit Cast
2-1/2"	2.70-3.00		IPS
3"	3.46-3.70		IPS
4"	4.75-5.14		CTS, IPS, Pit Cast
6"	6.84-7.24		DIP, Pit Cast
6" o.s.	7.05-7.45	7-1/2, 10,12, 15,20,24"	Pit Cast, AC 100/150/200
8"	8.99-9.39		IPS, DIP, Pit Cast
8" o.s.	9.27-9.67		Pit Cast, AC 100/150/200
10"	11.04-11.44		DIP, Pit Cast
12" u.s.	12.62-13.02		IPS
12"	13.10-13.50		DIP, Pit Cast
12" o.s.	14.00-14.40		IPS, AC 100/150/200

The Quick Cam® Emergency Repair Clamp Kit

The Emergency Repair Kit contains all required components and instructions that allow for easily joining and combination of various panels to make pressure rated repairs through 36" diameter. Repairs above 36" can also be made, however, they do not carry a pressure rating and are intended for large temporary repairs or gravity applications.

WARNING This is a non-restraining product. If pipe pullout can occur, proper anchoring of the pipe joint is required. Failure to anchor the pipe could result in the escape of line content, and may cause property damage, serious injury or death

SEWER PIPE RANGES		
4"	4.10	4.90
6"	6.20	7.00
8"	8.35	9.15
10"	10.50	11.30

WARNING This product is intended for use on HDPE SDR-17 or greater wall thicknesses, and shall be used for buried service only. The DPS Triple Tap product line is not approved for above ground applications on HDPE or other plastic pipe



Dresser Coupling & Repair
 1760 Haskell Road
 Olean, NY 14760
 P: 716-372-0160
 F: 716-372-1767
www.dresserutility.com/water



www.dresserutility.com

© 2024 Dresser Water, LLC – All rights reserved. Dresser Utility Solutions reserves the right to make changes in specifications and features shown herein, or discontinue the product described at any time without notice or obligation. Contact your Dresser Utility Solutions representative for the most current information. The Dresser Logo and all Trademarks containing the term "Dresser" are the property of Dresser, LLC, a subsidiary of Baker Hughes and are used under license. Actaris™ is a trademark owned by Itron, Inc. and is used under license.

FULL CIRCLE REPAIR CLAMPS

REPAIR CLAMPS



QUICK CAM EXTENDED REPAIR CLAMP
Saves Time, Labor and Inventory Dollars



SIZE (INCHES)	OD RANGE (INCHES)	SIZE (INCHES)							
		7.5	10	12	15	20	24	30	48
3	3.46-4.26	*	*	*	*	*	*	*	*
4	4.45-5.13	074-54192	*	074-54456	074-55244	*	074-56028	*	*
4 os	4.74-5.61	*	*	*	*	*	*	*	*
6	6.55-7.42	074-54260	*	074-54652	074-55432	*	*	*	*
6 os	6.84-7.65	*	*	*	*	*	*	*	*
8	8.54-9.44	074-54300	*	074-54772	074-55560	074-55996	074-56064	*	*
8 os	8.98-9.84	*	*	*	*	*	*	*	*
10	10.64-11.46	*	*	074-54896	074-55684	*	*	*	*
10 os	11.34-12.16	*	*	*	*	*	*	*	*
12	12.62-13.56	*	*	074-55016	074-55808	*	*	*	*
12os	13.65-14.42	*	*	*	*	*	*	*	*
Double Panel Ranges	14.75-16.24	*	*	*	*	*	*	*	*
	15.87-17.37	*	*	*	*	*	*	*	*
	16.80-18.30	*	*	*	*	*	*	*	*
	17.92-19.42	*	*	*	*	*	*	*	*
	18.88-20.35	*	*	*	*	*	*	*	*
	19.89-21.38	*	*	*	*	*	*	*	*
	20.99-22.49	*	*	*	*	*	*	*	*
	21.87-23.36	*	*	*	*	*	*	*	*
	22.65-24.15	*	*	*	*	*	*	*	*
	23.27-24.77	*	*	*	*	*	*	*	*
	24.94-26.43	*	*	*	*	*	*	*	*
25.88-27.38	*	*	*	*	*	*	*	*	

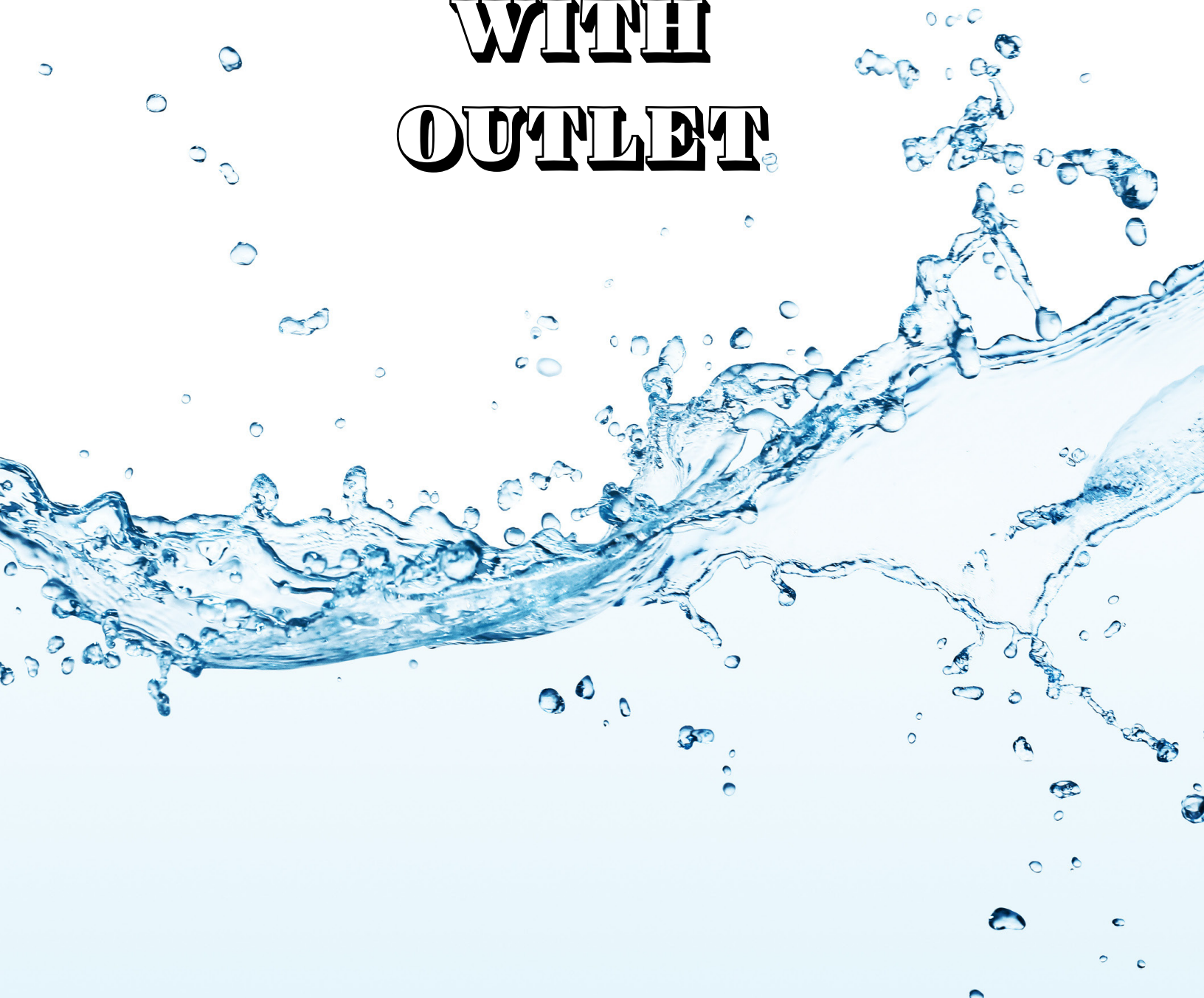
***NON STOCK CALL JABO SUPPLY**

OS -Over Sized Normally does not catch IPS but will catch AC Pipe (Check OD)

All stainless steel construction or with epoxy coated ductile iron lug

FULL CIRCLE REPAIR CLAMPS

**WITH
OUTLET**





FULL CIRCLE WITH OUTLETS (CC / NPT)

Tapped Full Circle[®] Repair Clamp Single Band

238

IMPORTANT LINKS

Click appropriate words
to go to:

[Standard Limited Warranty](#)

[Sales Terms & Conditions](#)

[Freight Policy](#)

[Returns Policy](#)

[Corrosion & Product Selection
Notice](#)



THIS PRODUCT DOES NOT RESTRAIN PIPE MOVEMENT. Proper anchoring is required to prevent pipe pullout. Failure to anchor or improper anchoring can result in dangerous pipe content escape, property damage, serious injury, or death. Read the product installation instructions prior to installing this product.

Description:

A tapped clamp to repair damaged pipe at broken or torn out service connections or branch lines.

Application: Service connection or branch line connections.

Key Features:

- Stainless Steel outlet welded to band and features a choice of NPT, CC, AWWA or BSP threads
- Removable lugs allow installation in tight spaces
- Maximum support and reinforcement with 360° coverage
- Drop-in bolts in the joint to be opened help ease installation
- A wide variety of outlet sizes and thread types available to meet demand
- Lugs have a Fusion-Bonded Flexi-Coat[®] Epoxy Finish for great corrosion resistance
- One starter (longer) bolt minimum per clamp thru 4.5" O.D. size to help with installation
- Range up to .40"
- Pressure ratings up to 300 PSI

Materials Specifications (subject to change):

BAND: Stainless Steel Type 304

LUGS: Ductile Iron ASTM A536, 80-55-06

GASKET: Nitrile (Buna N) compounded to produce superior storage and performance characteristics, while resisting water, acids, alkalis, most (aliphatic) hydrocarbon and many other chemicals

Temperature Range: -20°F to 180°F. Consult manufacturer for specific applications and other service temperatures

BRIDGE PLATE: 304 Stainless Steel recessed flush and bonded into gasket

BOLTS: High strength low alloy Steel with heavy semi-finished hexagon nuts. Per ANSI B. 18.2.2. Optional 304 Stainless Steel bolts with fluoropolymer coated nuts to prevent galling

NOTE: Also available in metric sizes. HDPE applications will require clamps with spring washers.

Pipe Applications: Cast Iron, Ductile Iron, Asbestos Cement, Steel, PVC, HDPE, and most other types of pipe

Sizes (in inches):

- 3, 4, 6, 8, 10, 12 offered with ¾" or 1" NPT taps
- 4, 6, 8, 10, 12 offered with 1¼", 1½" or 2" NPT taps
- 3, 4, 6, 8, 10, 12 offered with ¾", 1", 1¼", 1½", or 2" CC taps

FULL CIRCLE WITH OUTLETS (CC / NPT)

238 FULL CIRCLE REPAIR CLAMP WITH OUTLET

Single Band

CC OUTLET 3-8" PIPE SIZE



SIZE (INCHES)	LENGTH (INCHES)	OD RANGE (INCHES)	CC OUTLET				
			3/4"	1"	1-1/4"	1-1/2"	2"
3	7.5	3.46-3.70	*	*	NA	NA	NA
	10		NA	NA	NA	NA	NA
	12.5		*	*	NA	NA	NA
	15		NA	NA	NA	NA	NA
3-4	7.5	3.73-4.00	*	*	NA	NA	NA
	10		NA	NA	NA	NA	NA
	12.5		*	*	NA	NA	NA
	15		NA	NA	NA	NA	NA
3	7.5	3.96-4.25	*	*	NA	NA	NA
	10		NA	NA	NA	NA	NA
	12.5		*	*	NA	NA	NA
	15		NA	NA	NA	NA	NA
4	7.5	4.45-4.73	*	*	*	*	*
	10		NA	NA	*	*	*
	12.5		*	*	*	*	*
	15		NA	NA	*	*	*
4	7.5	4.74-5.14	*	*	*	*	*
	10		NA	NA	*	*	*
	12.5		073-04954	073-04962	*	*	*
	15		NA	NA	*	*	*
6	7.5	6.56-6.96	*	*	*	*	*
	10		NA	NA	*	*	*
	12		073-05374	*	*	*	*
	15		NA	NA	*	*	*
6	7.5	6.84-7.24	*	*	*	*	*
	10		NA	NA	*	*	*
	12.5		*	073-05382	*	*	*
	15		NA	NA	*	*	*
8	7.5	8.54-8.94	*	*	*	*	*
	10		NA	NA	*	*	*
	12.5		*	*	*	*	*
	15		NA	NA	*	*	*
8	7.5	8.99-9.39	*	*	*	*	*
	10		NA	NA	*	*	*
	12.5		073-05778	073-05786	*	*	073-05798
	15		NA	NA	*	*	*

***JABO SUPPLY NON STOCK**

FULL CIRCLE WITH OUTLETS (CC / NPT)

238 OUTLET CLAMP

CC OUTLET 10-12" PIPE SIZE



SIZE (INCHES)	LENGTH (INCHES)	OD RANGE (INCHES)	CC OUTLET				
			3/4"	1"	1-1/4"	1-1/2"	2"
10	7.5	10.64-11.0	*	*	*	*	*
	10		*	*	*	*	*
	12.5		*	*	*	*	*
	15		*	*	*	*	*
10	7.5	11.04-11.44	*	*	*	*	*
	10		*	*	*	*	*
	12.5		*	*	*	*	*
	15		*	*	*	*	*
12	7.5	12.62-13.02	*	*	*	*	*
	10		*	*	*	*	*
	12.5		*	*	*	*	*
	15		*	*	*	*	*
12	7.5	13.10-13.50	*	*	*	*	*
	10		*	*	*	*	*
	12.5		073-06386	073-06394	*	*	*
	15		*	*	*	*	*

*JABO SUPPLY NON STOCK

NPT OUTLET 3" -SMALL DIAMETER 4"



SIZE (INCHES)	LENGTH (INCHES)	OD RANGE (INCHES)	NPT OUTLET				
			3/4"	1"	1-1/4"	1-1/2"	2"
3	7.5	3.46-3.70	*	*	NA	NA	NA
	10		NA	NA	NA	NA	NA
	12		*	*	NA	NA	NA
	15		NA	NA	NA	NA	NA
3-4	7.5	3.73-4.00	*	*	NA	NA	NA
	10		NA	NA	NA	NA	NA
	12		*	*	NA	NA	NA
	15		NA	NA	NA	NA	NA
4	7.5	3.96-4.25	*	*	NA	NA	NA
	10		NA	NA	NA	NA	NA
	12		*	*	NA	NA	NA
	15		NA	NA	NA	NA	NA
4	7.5	4.45-4.73	*	*	*	*	*
	10		NA	NA	*	*	*
	12.5		*	*	*	*	*
	15		NA	NA	*	*	*

*JABO SUPPLY NON STOCK

FULL CIRCLE WITH OUTLETS (CC / NPT)

REPAIR CLAMP WITH OUTLET

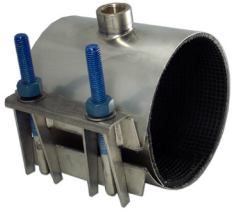
238 SINGLE BAND WITH OUTLET

NPT OUTLET 4"-12"



SIZE (INCHES)	LENGTH (INCHES)	OD RANGE (INCHES)	NPT OUTLET				
			3/4"	1"	1-1/4"	1-1/2"	2"
4	7.5	4.74-5.14	*	*	*	*	*
	10		073-04902	NA	*	*	*
	12.5		*	*	*	*	073-04974
	15		073-05010	NA	*	*	*
6	7.5	6.56-6.96	*	*	*	*	*
	10		NA	NA	*	*	*
	12		*	*	*	*	*
	15		073-05218	NA	*	*	*
6	7.5	6.84-7.24	*	*	*	*	*
	10		NA	NA	*	*	*
	12.5		*	*	*	*	073-05394
	15		NA	NA	*	*	*
8	7.5	8.54-8.94	*	*	*	*	*
	10		NA	NA	*	*	*
	12.5		*	*	*	*	*
	15		073-05630	NA	*	*	073-05650
8	7.5	8.99-9.39	*	*	*	*	*
	10		NA	NA	*	*	*
	12.5		*	*	*	*	*
	15		NA	NA	*	*	*
10	7.5	10.64-11.0	*	*	*	*	*
	10		*	*	*	*	*
	12.5		*	*	*	*	*
	15		*	*	*	*	*
10	7.5	11.04-11.44	*	*	*	*	*
	10		*	*	*	*	*
	12.5		*	*	*	*	073-06102
	15		*	*	*	*	*
12	7.5	12.62-13.02	*	*	*	*	*
	10		*	*	*	*	*
	12.5		*	*	*	*	*
	15		*	*	*	*	*
12	7.5	13.10-13.50	*	*	*	*	*
	10		*	*	*	*	*
	12.5		*	*	*	*	073-06402
	15		*	*	*	*	*

***JABO SUPPLY NON STOCK**



FULL CIRCLE WITH OUTLETS (CC / NPT) Tapped Full Circle[®] Repair Clamp

All Stainless Steel, Fabricated Lugs, Single Band

264

IMPORTANT LINKS

Click appropriate words to go to:

- [Standard Limited Warranty](#)
- [Sales Terms & Conditions](#)
- [Freight Policy](#)
- [Returns Policy](#)
- [Corrosion & Product Selection Notice](#)



THIS PRODUCT DOES NOT RESTRAIN PIPE MOVEMENT. Proper anchoring is required to prevent pipe pullout. Failure to anchor or improper anchoring can result in dangerous pipe content escape, property damage, serious injury, or death. Read the product installation instructions prior to installing this product.

Description: A single-band clamp designed to provide 360° pressure and complete leak repair

Application: For leaks at service outlets.

Key Features:

- Standard widths 7.5" through 30"
- Can be used to repair pipe or join pipe ends
- Can be manufactured to odd size pipe O.D.'s
- All 304 Stainless Steel construction for corrosion resistance
- A 360° Gasket seal provides maximum support and reinforcement
- A wide variety of outlet sizes and thread types available to meet demand
- Keeper bar helps pull clamp around the pipe and closes the clamp during installation
- Range up to .40"
- Larger clamps have a greater range to help reduce inventory

Materials Specifications (subject to change):

BAND: 304 Stainless Steel

LUGS: 304 Stainless Steel

KEEPER BARS: 304 Stainless Steel

GASKET: Nitrile (Buna N) to produce superior storage and performance characteristics while resisting water, acids, alkalis, most (aliphatic) hydrocarbon and other chemicals.

Temperature Range: -20° F to +180° F

BRIDGE PLATE: 304 Stainless Steel recessed flush and bonded to gasket.

STUD BOLTS: 304 Stainless Steel Epoxy coated

NUTS: fluoropolymer coated to prevent galling

Working Pressure: Up to 150 PSI

Pipe Applications: Cast & Ductile Iron, Asbestos Cement, PVC, HDPE*, Steel, Copper, Fiberglass and other types of pipes

**HDPE applications will require clamps with spring washers.*

Sizes (in inches): 3, 4, 6, 8 (Also available in metric sizes). ¾", 1", 1 ¼", and 2" NPT and CC tap sizes.

Bolt Numbers

BAND WIDTH INCHES	NUMBER OF STUDS	STUD SIZES
7.5	2	5/8" x 7"
10	3	
12.5	3	
15	5	

FULL CIRCLE WITH OUTLETS (CC / NPT)

REPAIR CLAMP WITH OUTLET

264 All Stainless Steel, Fabricated Lugs, Single Band

264 FULL CIRCLE WITH CC OUTLET



SIZE (INCHES)	LENGTH (INCHES)	OD RANGE (INCHES)	CC OUTLET				
			3/4"	1"	1-1/4"	1-1/2"	2"
3	7.5	3.46-3.70	*	*	NA	NA	NA
	10		*	*	NA	NA	NA
	12		*	*	NA	NA	NA
	15		*	*	NA	NA	NA
3-4	7.5	3.73-4.00	*	*	NA	NA	NA
	10		*	*	NA	NA	NA
	12		*	*	NA	NA	NA
	15		*	*	NA	NA	NA
4	7.5	3.96-4.25	*	*	NA	NA	NA
	10		*	*	NA	NA	NA
	12		*	*	NA	NA	NA
	15		*	*	NA	NA	NA
4	7.5	4.45-4.73	073-10454	*	*	*	*
	10		*	*	*	*	*
	12.5		073-10510	*	*	*	*
	15		*	*	*	*	*
4	7.5	4.74-5.14	073-10562	*	*	*	*
	10		*	*	*	*	*
	12.5		*	*	*	*	*
	15		*	*	*	*	*
6	7.5	6.56-6.96	*	*	*	*	*
	10		*	*	*	*	*
	12		*	*	*	*	*
	15		*	*	*	*	*
6	7.5	6.84-7.24	*	*	*	*	*
	10		*	*	*	*	*
	12.5		*	*	*	*	*
	15		*	*	*	*	*
8	7.5	8.54-8.94	*	*	*	*	*
	10		*	*	*	*	*
	12.5		*	*	*	*	*
	15		*	*	*	*	*
8	7.5	8.99-9.39	*	*	*	*	*
	10		*	*	*	*	*
	12.5		*	*	*	*	*
	15		*	*	*	*	*

*JABO SUPPLY NON STOCK

FULL CIRCLE WITH OUTLETS (CC / NPT)

FULL CIRCLE REPAIR CLAMP WITH OUTLET

264 All Stainless Steel, Fabricated Lugs, Single Band

264 FULL CIRCLE WITH NPT OUTLET



SIZE (INCHES)	LENGTH (INCHES)	OD RANGE (INCHES)	NPT OUTLET				
			3/4"	1"	1-1/4"	1-1/2"	2"
3	7.5	3.46-3.70	*	*	NA	NA	NA
	10		*	*	NA	NA	NA
	12		*	*	NA	NA	NA
	15		*	*	NA	NA	NA
3-4	7.5	3.73-4.00	*	*	NA	NA	NA
	10		*	*	NA	NA	NA
	12		*	*	NA	NA	NA
	15		*	*	NA	NA	NA
4	7.5	3.96-4.25	*	*	NA	NA	NA
	10		*	*	NA	NA	NA
	12		*	*	NA	NA	NA
	15		*	*	NA	NA	NA
4	7.5	4.45-4.73	*	*	*	*	*
	10		*	*	*	*	*
	12.5		*	*	*	*	*
	15		*	*	*	*	*
4	7.5	4.74-5.14	*	*	*	*	*
	10		*	*	*	*	*
	12.5		*	*	*	*	073-10646
	15		*	*	*	*	*
6	7.5	6.56-6.96	*	*	*	*	*
	10		*	*	*	*	*
	12		*	*	*	*	*
	15		*	*	*	*	*
6	7.5	6.84-7.24	*	*	*	*	*
	10		*	*	*	*	*
	12.5		*	*	*	*	*
	15		*	*	*	*	*
8	7.5	8.54-8.94	*	*	*	*	*
	10		*	*	*	*	*
	12.5		*	*	*	*	*
	15		*	*	*	*	*
8	7.5	8.99-9.39	*	*	*	*	*
	10		*	*	*	*	*
	12.5		*	*	*	*	*
	15		*	*	*	*	*

*JABO SUPPLY NON STOCK

FULL CIRCLE WITH OUTLETS (CC / NPT)

TPS WIDE RANGE SADDLES AND OUTLET CLAMPS

PIPE APPLICATION: WIDE RANGE UNIVERSAL, MAY BE USED ON MOST PIPES

QUICK CAM REPAIR CLAMP WITH OUTLET

CC OUTLET



JABO #	PIPE SIZE	OD RANGE	OUTLET SIZE	
			LENGTH	
074-54196	4"	4.72-5.13	3/4"	7.5
074-54197			1"	7.5
*	6"	6.55-7.42	3/4"	7.5
074-54269			1"	7.5
074-54812	8"	8.54-9.44	3/4"	12"
074-54780			1"	12"

ADDITIONAL SIZES, OD RANGE, OUTLETS AND LENGTH AVAILABLE UPON REQUEST

BELL JOINT LEAK CLAMPS

BY PRODUCT



BELL JOINT LEAK CLAMPS



Bell Joint Leak Clamp

274

IMPORTANT LINKS

Click appropriate words to go to:

[Standard Limited Warranty](#)
[Sales Terms & Conditions](#)
[Freight Policy](#)
[Returns Policy](#)
[Corrosion & Product Selection Notice](#)



THIS PRODUCT DOES NOT RESTRAIN PIPE MOVEMENT. Proper anchoring is required to prevent pipe pullout. Failure to anchor or improper anchoring can result in dangerous pipe content escape, property damage, serious injury, or death. Read the product installation instructions prior to installing this product.

Description: Bell Joint Leak Clamp.

Application: Sealing and/or preventing leaks on Cast Iron bell and spigot caulked or rubber ring joints.

Key Features:

- Designed to fit both caulked or rubber ring joints in virtually all classes and brands of Cast Iron or Ductile Iron pipe within same nominal size
- Suitable for use on C900 and C905 PVC through 24" with the use of longer bolts-DR 18 minimum
- Kee-Lok gasket design eliminates need for field cutting gaskets—the ends are easily joined—no need of staples, tongs, tape or other gadgets to hold the gasket ends together (not available in 14", 30" or 36")
- Flexi-Coat® Fusion-Bonded Epoxy finish standard for great corrosion resistance
- Can be used to prevent leaking bell gaskets as well as repairing them
- Can be installed without interrupting the flow of the pipeline
- Front and back pieces are interchangeable
- All Bell-Spigot pieces are identical, making installation easier

Materials Specifications (subject to change):

BELL-SPIGOT RING: Ductile Iron per ASTM S36 or Carbon Steel on 14" size only—ASTM A36

GASKET: Nitrile (Buna N) – Compounded to resist oil, natural gas, acids, alkalis, most (aliphatic) hydrocarbon, water and other chemicals

BOLTS & NUTS: High strength, low alloy Steel with heavy, semi-finished hexagon nuts to ANSI-A21.11 standards. Two inch clamps have electro-galvanized Steel studs.

Temperature Range: -20°F to +180°F

FINISH: Flexi-Coat®, Fusion-Bonded Epoxy Finish

Working Pressure: 150 PSI (water).

Pipe Applications: Ductile Iron, Cast Iron

Sizes (in inches): 2, 3, 4, 6, 8, 10, 12, 14, 16, 18, 20, 24, 30, 36

BELL JOINT LEAK CLAMPS

BELL JOINT LEAK CLAMP

274 SMITH BLAIR DI / C900 & C905

Ductile Iron Pipe / C900 & C905 PVC



SIZE / OD RANGE		SHORT BELL				LONG BELL			
		BOLT SIZE (INCHES)				BOLT SIZE (INCHES)			
SIZE	OD RANGE	BOLT TYPE		BOLT SIZE & #		BOLT TYPE		BOLT SIZE & #	
(INCHES)	(INCHES)	ALLOY	STAINLESS	**BOLT SIZE	#BOLTS	ALLOY	STAINLESS	***BOLT SIZE	#BOLTS
2+	2.5	*	*	1/2 x 7	4	NA	NA	NA	NA
3+	3.80-3.96	*	*	5/8 x 9	4	NA	NA	NA	NA
4+	4.80-5.00	073-12062	073-12066	5/8 x 9	4	*	*	5/8 x 17	4
6	6.90-7.10	073-12070	073-12074	5/8 x 9	4	*	*	5/8 x 17	4
8	9.05-9.30	073-12078	073-12082	5/8 x 10 1/2	6	*	*	5/8 x 17	6
10	11.10-11.40	073-12086	073-12090	5/8 x 10 1/2	6	*	*	5/8 x 17	6
12	13.20-13.50	073-12094	073-12098	5/8 x 11	6	*	*	5/8 x 17	6
14*	15.3	*	*	5/8 x 11	8	*	*	5/8 x 17	8
14*	15.65	*	*	5/8 x 13	8	*	*	5/8 x 17	8
16	17.40-17.80	*	*	5/8 x 13	9	*	*	5/8 x 25	9
18	19.50-19.92	*	*	5/8 x 13	12	*	*	5/8 x 25	12
20	21.60-22.06	*	*	5/8 x 13	12	*	*	5/8 x 25	12
24	25.80-26.32	*	*	5/8 x 17	12	*	*	5/8 x 25	12
30†	31.74-32.74	*	*	5/8 x 17	15	*	*	5/8 x 27	15
36†	37.96-38.70	*	*	5/8 x 17	18	*	*	5/8 x 27	18
†Not recommended for PVC pipe		*Non Stock Call Jabo Supply				*Non Stock Call Jabo Supply			
		Short Bell = Studs				*Long Bell = 12" of Threads			
•Available with Bias Cut Gasket Only									



TPS Ultra-Sleeve®



**Up To
200 PSI
Pressure**



**Universal
Pipe Types**



**Reduce
Time
On Job**

Super Range Joint Repair

For Encapsulation and Repair of Split Bells, Leaking Joints or Couplings on IPS, DIP, CIP, PVC Joints, and Asbestos Cement Collars

One sleeve fits all bells in a nominal diameter



water & industrial

BELL JOINT LEAK CLAMPS

Ultra-Sleeve® For Repair of Most Types of Joints



At Dresser Pipeline Solutions, we are dedicated to providing innovative products designed to save time, labor and inventory dollars in the water and wastewater industries.

The latest entry into our ever-growing product portfolio is the Ultra-Sleeve Bell Joint Repair Product. The Ultra-Sleeve Bell Joint Encapsulation Sleeve is the ideal product for the repair of a split bells, leaking couplings, old repair clamps or other types of joints.

This unique sleeve eliminates the need to shut down the water main, saving on time and repair operations. The sleeve is relatively light in weight, has preinstalled side-bar gaskets and an easy to install butt gasket on the end gland. Distinctive design eliminates having to tighten end gland bolts, allowing for quicker assembly. No need to trim or cut gaskets. Simply piece each half together and tighten the bolts for a quick, permanent repair. Easy to follow instructions included in every sleeve.

Ultra-Sleeve Exclusive:

- » Wide Range – One sleeve easily covers CIP/DIP/PVC bells, most couplings with two or more bolts and asbestos cement pipe collars/couplings
- » Easy to Install – Two Pieces, Easy to Reach Starter Bolts: Tighten the Side Bolts With Standard Wrench. Always follow the directions included with the product.
- » Eliminate the Need for a Bolted End Gland (Saving Time and Labor During Installation)
- » Cost Effective – One Sleeve Works on Multiple Pipe Classes (Works on AC, DIP, CIP, IPS, PVC Diameters and more)
- » Rigid Construction with Lifting Eyes to assist in installation
- » No Need to Shut Off Water Main: Use as a Coupling to Join Pipe Ends of the Same Diameter or Use for a 360 Degree Encapsulation of the Pipe
- » For Below Ground Use (for Special Applications call Customer Service)



Specifications:

- » Working Pressures up to 200 psi (Tested to 300 psi) Working Pressure is Determined by the Actual Diameter of the Pipe
- » Qualification Tested to 1.5X Working Pressure
- » Gasket Material: NSF-61 Approved NBR Rubber for Water and Sewer services
- » Temperature: Maximum Continuous Temperature at 80° F
- » Shell constructed of Cast Ductile Iron or carbon steel for larger diameters
- » Nuts, Bolts and Washers: 18-8 Grade 304 Stainless
- » Steel Bolts and 304 Stainless Nuts Coated with Fluoropolymer Coating to Prevent Galling
- » Coating – Minimum 10 Mil Fusion-Bonded Epoxy (NSF-61 Compliant)
- » Equipped with NPT Tapped Vent Plugs on Top and Bottom Shells
- » Test Port Plugs and Lifting Eye Included
- » Perimeter Bolting and Gasket System (no end glands to tighten)



Patented Layered Gasket System for Easy Sizing to the Pipe (Up to 1.3" Total Range in 4-12" Sizes)

Pressure rating, temperature rating, and bolt torque shown on product label are the actual ratings for each individual product.

BELL JOINT LEAK CLAMPS

Technical Specifications:

Nom. Diameter	Total Range	Inner Layer	Pipe Classes	Outer Layer	Pipe Classes
2"	2.35 to 3.13	2.35-2.78	IPS (2.35), CI (2.50)	2.78-3.13	
4"	4.45 to 5.61	4.45-5.10	IPS (4.50), DI (4.80) CI (5.00), AC (4.64-5.07)	5.12-5.61	AC (5.14-5.57)
6"	6.55 to 7.65	6.55-7.15	IPS (2.35), CI (2.50)	7.15-7.65	AC (7.15-7.60)
8"	8.54 to 9.84	8.54-9.22	IPS (2.35), CI (2.50)	9.25-9.84	AC (9.27-9.79)
10"	10.64 to 11.46	10.64-11.15	IPS (2.35), CI (2.50)	11.15-11.46	CI (11.40), AC (11.24-11.30)
10" o.s.	11.34 to 12.16	11.34-11.71	IPS (2.35), CI (2.50)	11.71-12.16	AC (11.77-12.12)
12"	12.62 to 13.56	12.62-13.26	IPS (2.35), CI (2.50)	13.15-13.56	CI (13.50), AC (13.37-13.44)
12" o.s.	13.42 to 14.45	13.42-13.92	CI (13.50) AC (13.42-13.92)	14.00-14.45	AC (14.04-14.38)
16"	17.32 to 17.45	Single Layer Only	DIP		
16" o.s.	17.72 to 17.85	Single Layer Only	CIP		
20"	21.52 to 21.65	Single Layer Only	DIP		
20" o.s.	21.98 to 22.11	Single Layer Only	CIP		
24"	25.72 to 25.85	Single Layer Only	DIP		
24" o.s.	26.24 to 26.40	Single Layer Only	CIP		

Gasket Ranges are Clearly Defined on Product Labeling. Always verify the Range by Measuring the Pipe.

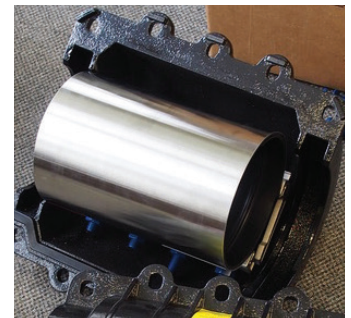
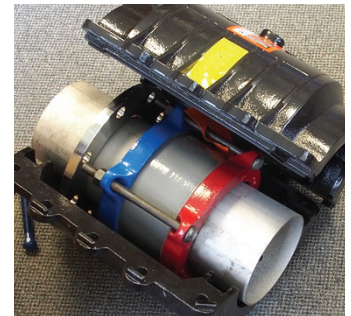
Working Pressure Ratings up to 200 PSI. For Specific Working Pressure by Size or Sizes Above 24" Consult Factory

Application Note:

Ultra-Sleeves may be provided to meet custom application needs. Contact DPS Customer Service for custom application requirements. *Individual product labeling will specify product capabilities.*

Materials of Construction:

Body/Shell:	ASTM A-536 Gr 65-45-12 ASTM A-36
Coating:	MIN 10 mil thick NSF-61 Approved Fusion Bonded Epoxy Coating
Sealing Gaskets:	Nitrile Butadiene Rubber (NBR) Approved ANSI/NSF-61 (4"-12" Sizes) EPDM rubber Approved ANSI/NSF - 61 (16"-24" Sizes)
Bolts:	Oval Neck track head per ANSI/ASME B18.10 5/8-11 UNC Rolled Thread 18-8 Type 304 Stainless Steel per ASTM A-193 Grade B8 Finish: Fluoroelastomer coating.
Nuts:	Heavy Hex Nut 5/8-11 UNC Rolled Thread Type 316 High Temp Stainless Steel per ASTM A-194 Grade 8 Finish: Fluoroelastomer coating to prevent galling.
Washers:	Heavy Duty 5/8 Inch Washer Material 18-8 Type 304 Stainless Steel Fluoroelastomer coating to prevent galling.



BELL JOINT LEAK CLAMPS

Pressure Rating:

ULTRA-SLEEVE® Bell Joint Repair Sleeves when properly installed are capable of working pressures as shown on the chart below, for water and sewer applications.

Nominal Size	Range	Working Pressure	
		IPS Diameters	DI, PIT CAST, AC Diameters
4"	4.45-5.61	200	200
6"	6.55-7.65	200	200
8"	8.54-9.84	200	200
10"	10.64-11.46	175	200
10" OS	11.34-12.16	175	200
12"	12.62-13.56	175	200
12" OS	13.42-14.45	175	200
16"	17.32-17.45	-	150
16" OS	17.72-17.85	-	150
24"	25.72-25.85	-	150
24" OS	26.24-26.40	-	150

For bolt torque requirement, temperature rating, and pressure rating, always refer to product label and installation instructions.

CONTACT FACTORY for sizes above 24"

Note: Pressure rating shall not exceed the pressure rating of the pipe on which the sleeve is installed. For any particular installation, the allowable working pressure will be determined by the size of pipe, type of pipe, condition of the pipe, service conditions, environmental conditions, and installation workmanship. Consult the factory for specific information regarding application and working pressure.

Application Note:

Ultra-Sleeves may be provided to meet custom application needs. Contact DPS Customer Service for custom application requirements. *Individual product labeling will specify product capabilities.*

Applicable Standards:

AWWA C-110/111

ANSI A21./10/21.11

ASTM A-36 (for Steel components)

ASTM A-536 (for Ductile Iron components)

NSF/ANSI Standard 61 – Drinking Water Systems Components

ASTM D2000-12 – Standard Classification system for rubber products

ASME B1.20.1 Pipe Treads, General Purpose, Inches



Dresser Pipeline Solutions
 1760 Haskell Road
 Olean, NY 14760
 P: 716-372-0160
 E: tps@dresserutility.com
 www.dresserutility.com/water



www.dresserutility.com

© 2023 Natural Gas Solutions North America, LLC – All rights reserved. Dresser Utility Solutions reserves the right to make changes in specifications and features shown herein, or discontinue the product described at any time without notice or obligation. Contact your Dresser Utility Solutions representative for the most current information. The Dresser Logo and all Trademarks containing the term "Dresser" are the property of Dresser, LLC, a subsidiary of Baker Hughes.

BELL JOINT LEAK CLAMPS

BELL JOINT LEAK CLAMP*DRESSER ULTRA SLEEVE*

One Sleeve Fits All Hubs and Bells, Leaking Joints on IPS, DIP, CIP and PVC Joints, Asbestos Cement Collars. Also encapsulates old couplings, repair clamps and other old leaking repair devices. Nearly all pipe diameters are covered by one sleeve in the 4" to 12" diameters while providing up to 1.3" of range and 4 degrees of dynamic deflection per end. Diameters covered include IPS, DIP, CIP, and AC (asbestos cement diameters including class 200).

JABO PART#	SIZE	OD
074-58555	2"	2.35-3.13
074-58556	4"	4.45-5.61
074-58560	6"	6.55-7.65
074-58564	8"	8.54-9.84
074-58568	10"	10.64-11.46
074-58570	10"	11.34-12.16
074-58572	12"	12.62-13.56
074-58574	12"	13.42-14.45

WILL ENCAPSULATES MOST REPAIR CLAMPS INCLUDING HYMAX

SAVES TIME AND MONEY BY NOT HAVING TO SHUT WATER OFF TO MAKE THE REPAIR

RACHET STRAPS

BY PRODUCT



Jabo has a solution for your high-pressure leaks. “Save money and Down Time”

QFC Quick Fix Pipe Clamps

Quick Fix Clamp Eliminates Downtime for Leak Repair

The Quick Fix pipe repair clamp from Reparex, provides a quick, durable fix for wear-generated leaks in pneumatic conveying lines and elbows carrying abrasive materials. A Quick Fix clamp consists of tough, wear-resistant alumina ceramic tiles encased in a flexible polyurethane pad, and includes a strong nylon strap with a hand-operated tightening ratchet. Simply place the pad over the hole in the pipe and tighten the strap to stop the leak. The pad conforms to the pipe diameter, and the ceramic tiles provide high wear resistance and added rigidity.

Unlike other repair systems that can require hours for application and curing of epoxy -- and usually require shutdown of the conveying system -- the Quick Fix clamp can be applied in minutes with little or no interruption of operations. The clamps are effective in both dry and wet applications. Preparation is minimal: users need only remove scale from the pipe and wipe it clean. No adhesive or additional sealing media is necessary.

For holes up to **3/8" (10 mm)** in diameter, the clamps can contain pressure as high as **290 psi (2000 Kpa)**. For holes **3/8" and 3/4" (10-20 mm)**, **pressure capability is 145 psi (1000 Kpa)**.

Clamps are available for three ranges of pipe diameter: 3 5/8" – 8" (90-200 mm), 6" – 12" (150-300 mm), and 12" – 20" (300-500 mm). Larger sizes are available on request.

The Quick Fix pipe repair clamp from Reparex, Inc., Latrobe, Pa., provides a quick, durable fix for wear-generated leaks in pipes carrying abrasive materials.

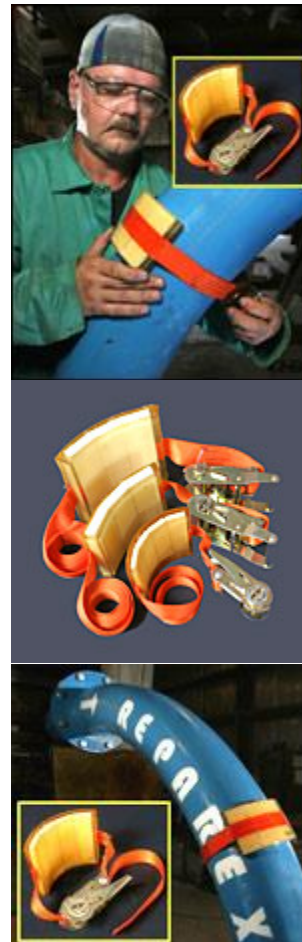
Call your Jabo Customer Service Rep today for Pricing

Below are the Jabo part numbers

950-10000 (Small Size) 3 5/8"-8" Pipe Size

950-10002 (Med Size) 6"-12" Pipe Size

950-10004 (Large Size) 12"-20" Pipe Size



CTS PIPE

QUICK REFERENCE GUIDE

IF TYPE OF PIPE IS KNOWN



CTS PIPE CLAMPS

QUICK REFERENCE BY PIPE TYPE

CTS PIPE CLAMP

244 REDI REPAIR CLAMP

CTS



JABO PART#	SIZE	OD	LENGTH
073-07746	1/2"	0.63	3
073-07754			6
073-07786	3/4"	0.88	3
073-07794			6
073-07826	1"	1.13	3
073-07834			6
073-07866	1 1/4"	1.38	3
073-07874			6
073-07882	1-1/2"	1.63	3
073-07890			6
073-07946	2"	2.13	3
073-07954			6
# ELECTRO-GALVANIZED BOLTS			
STAINLESS STEEL BOLTS ARE AVAILABLE UPON REQUEST (NON STOCK)			
244 FOR CTS IS NOT AVAILABLE LONGER THAN 6"			

IPS PIPE REPAIR CLAMPS

QUICK REFERENCE GUIDE

IF TYPE OF PIPE IS KNOWN



IPS PIPE CLAMPS

QUICK REFERENCE BY PIPE TYPE

IPS QUICK GUIDE

244 REDI CLAMP FOR SMALL DIAMETER IPS PIPE



FULL CIRCLE

SIZE INCHES	OD RANGE	LENGTH W/ LOW ALLY BOLTS & NUTS		
		3	6	12
1/2"	.84	073-07762	073-07770	*
3/4"	1.05	073-07802	073-07810	*
1"	1.32	073-07842	073-07850	073-07858
1-1/4"	1.66	073-07898	073-07906	073-07914
1-1/2"	1.90	073-07922	073-07930	073-07938
2"	2.38	074-07962	073-07970	073-07978
*NON STOCK CALL JABO SUPPLY				

245 REDI CLAMP FOR IPS PIPE



NOT FULL CIRCLE

SIZE (INCHES)	OD RANGE (INCHES)	SIZE (INCHES) W/ LOW ALLOY BOLTS & NUTS			
		3	6	9	12
1/2	0.84		073-07994	NA	NA
3/4	1.05	073-08002	073-08010	NA	NA
1	1.32	073-08018	073-08026	NA	NA
1-1/4	1.66	073-08034	073-08042	NA	NA
1-1/2	1.90	073-08050	073-08058	NA	NA
2	2.38	073-08082	073-08090	*	*
2-1/2	2.88	073-08114	073-08122	*	*
3	3.50	073-08178	073-08186	*	*
	4.00	*	*	*	*
3-1/2-4	4.25	*	*	*	*
4	4.50	073-08258	073-08266	073-08274	*
5	5.56	*	073-08326	*	*
	6.63	073-08386	073-08394	073-08402	073-08410
8	8.63	073-08458	*	073-08466	*
10	10.75	*	*	073-08518	*
12	12.75	*	*	*	*
*NON STOCK CALL JABO SUPPLY					

IPS PIPE CLAMPS

QUICK REFERENCE BY PIPE TYPE

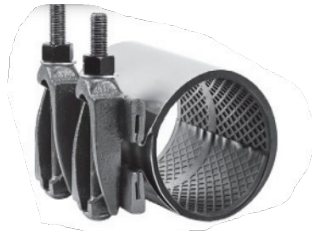
IPS QUICK GUIDE



SMITH BLAIR 226FOR IPS PIPE

SIZE (INCHES)	OD RANGE (INCHES)	IPS OD	SIZE (INCHES) W/ LOW ALLOY BOLTS & NUTS					
			7.5	10	12.5	15	20	24
2	2.35-2.63	2.38	073-01622	073-01630	073-01638	073-01646	NA	NA
2 1/4-2 1/2	2.70-3.00	2.88	073-01654	*	*	8	NA	NA
3	3.46-3.70	3.50	073-01718	*	073-01734	073-01742	NA	NA
3-3-1/2	3.73-4.00	4.00	*	*	*	*		
4	4.45-4.73	4.50	073-01814	073-01822	073-01830	073-01838	NA	NA
5	5.22-5.62	5.56	*	*	*	*	*	*
6	6.56-6.96	6.63	073-02066	073-02074	073-02082	073-02090	073-02098	*
8	8.54-8.94	8.63	073-02346	073-02354	073-02362	073-02370	073-02378	*
10	10.64-11.04	10.75	073-02566	073-02574	073-02582	073-02590	073-02598	*
12	12.62-13.02	12.75	073-02846	073-02854	073-02862	073-02870	073-02878	*
14	13.70-14.10	14.00	073-03014	073-03022	073-03030	073-03038	073-03046	073-03054
14	14.00-14.40	14.00	073-03074	073-03082	073-03090	073-03098	073-03106	

*NON STOCK CALL JABO SUPPLY



JCM 101 FOR IPS PIPE

SIZE (INCHES)	OD RANGE (INCHES)	IPS OD	SIZE (INCHES) W/ LOW ALLOY BOLTS & NUTS					
			6"	7	12'	15	18	24
1-1/2	1.88 - 2.15	1.9	*	*	*	*	*	*
2	2.35-2.63	3.5	*	*	*	*	*	*
2-2/12	2.70-3.13	2.88	*	*	*	*	*	*
3	3.46-3.70	3.5	071-00545	071-00540	071-00543	*	*	*
3-1/2	3.73-4.13	4	*	*	*	*	*	*
4	4.45-4.73	4.5	071-00548	071-00550	071-00560	071-00562	*	*
6	6.56-6.96	6.63	*	071-00575	071-00580	071-00582	*	*
8	8.54-8.94	8.63	*	*	071-00600	071-00602	*	*
10	10.60-11.00	10.75	*	*	071-00620	071-00626	*	*
12	12.60-13.02	12.75	*	*	071-00680		*	*

*NON STOCK CALL JABO SUPPLY

IPS PIPE CLAMPS

QUICK REFERENCE BY PIPE TYPE

IPS QUICK GUIDE



SMITH BLAIR 227 FOR IPS PIPE

SIZE (INCHES)	OD RANGE (INCHES)	IPS OD	SIZE (INCHES) W/ LOW ALLOY BOLTS & NUTS					
			7.5	10	12.5	15	20	24
3	3.49-4.29	3.5	*	*	NA	*	*	*
4	4.44-5.24	4.50	NA	*	NA	*	*	*
6	6.62-7.42	6.63	NA	*	NA	*	*	*
8	8.62-9.42	8.63	NA	*	NA	*	*	*
10	10.75-11.55	10.75	NA	*	NA	*	*	*
12	12.75-13.55	12.75	NA	*	NA	*	*	*

*NON STOCK CALL JABO SUPPLY



SMITH BLAIR 261 FOR IPS PIPE

SIZE (INCHES)	OD RANGE (INCHES)	IPS OD	SIZE (INCHES) W/ LOW ALLOY BOLTS & NUTS					
			7.5	10	12.5	15	20	24
2	2.35-2.63	2.38	*	*	*	*	NA	NA
3	3.46-3.70	3.5	*	*	*	*	NA	NA
3-1/2	3.73-4.00	4.00	*	*	*	*	NA	NA
	3.96-4.25		*	*	*	*	NA	NA
4	4.45-4.73	4.5	073-09310	*	073-09318	*	NA	NA
4-1/2	4.95-5.35	5.00	*	*	*	*	*	NA
6	6.56-6.96	6.63	073-09398	*	073-09406	*	*	*
8	8.54-8.94	8.63	073-09534	*	073-09542	*	*	*
10	10.64-11.04	10.75	*	*	073-09654	*	*	*
12	12.62-13.02	12.75	*	*	*	*	*	*

*NON STOCK CALL JABO SUPPLY

IPS PIPE CLAMPS

QUICK REFERENCE BY PIPE TYPE

IPS QUICK GUIDE



DRESSER WIDE RANGE FITS IPS- AC 100

SIZE (INCHES)	OD RANGE (INCHES)	IPS OD	SIZE (INCHES) W/ LOW ALLOY BOLTS & NUTS					
			7.5	10	12	15	20	24
4	4.45-5.13	4.50	074-54192	*	074-54456	074-55244	*	074-56028
6	6.55-7.42	6.63	074-54260	*	074-54652	074-55432	*	*
8	8.54-9.44	8.63	074-54300	*	074-54772	074-55560	074-55996	074-56064
10	10.64-11.46	10.75	*	*	074-54896	074-55684	*	*
12	12.62-13.56	12.75	*	*	074-55016	074-55808	*	*

***NON STOCK CALL JABO SUPPLY**

DI / C900 / CAST IRON REPAIR CLAMPS QUICK REFERENCE GUIDE

IF TYPE OF PIPE IS KNOWN



DUCTILE IRON, C900, CAST IRON, CLAMPS

QUICK REFERENCE BY PIPE TYPE

DUCTILE IRON / C900 / CAST IRON QUICK GUIDE



SMITH BLAIR 226 FOR DI / C900 / CAST IRON

SIZE (INCHES)	OD RANGE (INCHES)	ACTUAL OD DI/C900/CI	SIZE (INCHES) W LOW ALLOY BOLTS & NUTS						
			7.5	10	12.5	15	20	24	30
3	3.96-4.25	3.96	*	*	*	*	NA	NA	NA
4	4.74-5.14	4.8	*	*	*	073-01870	073-01878	*	*
6	6.56-6.96	6.9	073-02066	073-02074	073-02082	073-02090	073-02098	*	*
8	8.99-9.39	9.05	073-02402	073-02410	073-02418	073-02426	073-02434	*	*
10	11.04-11.44	11.1	073-02622	073-02630	073-02638	073-02646	073-02654	*	*
12	13.10-13.50	13.2	073-02902	073-02910	073-02918	073-02926	073-02934	*	*

*NON STOCK CALL JABO SUPPLY

DI=DUCTILE IRON

CI= CAST IRON



SMITH BLAIR 227 FOR DI / C900 / CAST IRON

SIZE (INCHES)	OD RANGE (INCHES)	ACTUAL OD DI/C900/CI	SIZE (INCHES) W LOW ALLOY BOLTS & NUTS						
			7.5	10	12.5	15	20	24	30
4	4.44-5.24	4.8	NA	*	NA	*	*	*	*
	4.74-5.57		NA	*	NA	*	*	*	*
6	6.62-7.42	6.9	NA	*	NA	*	*	*	*
	6.84-7.64		NA	*	NA	*	*	*	*
8	8.62-9.42	9.05	NA	*	NA	*	*	*	*
	8.99-9.79		NA	*	NA	*	*	*	*
10	10.75-11.55	11.1	NA	*	NA	*	*	*	*
	11.10-11.90		NA	*	NA	*	*	*	*
12	12.75-13.55	13.2	NA	*	NA	*	*	*	*
	13.20-14.00		NA	*	NA	*	*	*	*

DUCTILE IRON, C900, CAST IRON, CLAMPS

QUICK REFERENCE BY PIPE TYPE

DUCTILE IRON / C900 / CAST IRON QUICK GUIDE



SMITH BLAIR 261FOR DI / C900 / CAST IRON

SIZE (INCHES)	OD RANGE (INCHES)	ACTUAL OD DI/C900/CI	SIZE (INCHES) W LOW ALLOY BOLTS & NUTS						
			7.5	10	12.5	15	20	24	30
4	4.74-5.14	4.80	073-09326	*	*	*	*	NA	NA
6	6.56-6.96	6.90	073-09398	*	073-09406	*	*	*	*
	6.84-7.24	6.90	073-09426	*	073-09434	*	*	*	*
8	8.99-9.39	9.05	073-09562	*	073-09570	*	*	*	*
10	11.04-11.44	11.10	*	*	073-09682	*	*	*	*
12	13.10-13.50	13.20	*	*	*	*	*	*	*
12	13.40-13.80	13.20	*	*	*	*	*	*	*

*NON STOCK CALL JABO SUPPLY

DI=DUCTILE IRON

CI= CAST IRON



DRESSER WIDE RANGE FITS IPS- AC 100

SIZE (INCHES)	OD RANGE (INCHES)	IPS OD	SIZE (INCHES) W LOW ALLOY BOLTS & NUTS					
			7.5	10	12	15	20	24
4	4.45-5.13	4.50	074-54192	*	074-54456	074-55244	*	074-56028
6	6.55-7.42	6.63	074-54260	*	074-54652	074-55432	*	*
8	8.54-9.44	8.63	074-54300	*	074-54772	074-55560	074-55996	074-56064
10	10.64-11.46	10.75	*	*	074-54896	074-55684	*	*
12	12.62-13.56	12.75	*	*	074-55016	074-55808	*	*

*NON STOCK CALL JABO SUPPLY

DUCTILE IRON, C900, CAST IRON, CLAMPS

BELL JOINT LEAK CLAMP

274 SMITH BLAIR DI / C900 & C905

Ductile Iron Pipe / C900 & C905 PVC



SIZE / OD RANGE		SHORT BELL				LONG BELL			
		BOLT SIZE (INCHES)				BOLT SIZE (INCHES)			
SIZE	OD RANGE	BOLT TYPE		BOLT SIZE & #		BOLT TYPE		BOLT SIZE & #	
(INCHES)	(INCHES)	ALLOY	STAINLESS	**BOLT SIZE	#BOLTS	ALLOY	STAINLESS	***BOLT SIZE	#BOLTS
2+	2.5	*	*	1/2 x 7	4	NA	NA	NA	NA
3+	3.80-3.96	*	*	5/8 x 9	4	NA	NA	NA	NA
4+	4.80-5.00	073-12062	073-12066	5/8 x 9	4	*	*	5/8 x 17	4
6	6.90-7.10	073-12070	073-12074	5/8 x 9	4	*	*	5/8 x 17	4
8	9.05-9.30	073-12078	073-12082	5/8 x 10 1/2	6	*	*	5/8 x 17	6
10	11.10-11.40	073-12086	073-12090	5/8 x 10 1/2	6	*	*	5/8 x 17	6
12	13.20-13.50	073-12094	073-12098	5/8 x 11	6	*	*	5/8 x 17	6
14*	15.3	*	*	5/8 x 11	8	*	*	5/8 x 17	8
14*	15.65	*	*	5/8 x 13	8	*	*	5/8 x 17	8
16	17.40-17.80	*	*	5/8 x 13	9	*	*	5/8 x 25	9
18	19.50-19.92	*	*	5/8 x 13	12	*	*	5/8 x 25	12
20	21.60-22.06	*	*	5/8 x 13	12	*	*	5/8 x 25	12
24	25.80-26.32	*	*	5/8 x 17	12	*	*	5/8 x 25	12
30†	31.74-32.74	*	*	5/8 x 17	15	*	*	5/8 x 27	15
36†	37.96-38.70	*	*	5/8 x 17	18	*	*	5/8 x 27	18
†Not recommended for PVC pipe		*Non Stock Call Jabo Supply				*Non Stock Call Jabo Supply			
		Short Bell = Studs				*Long Bell = 12" of Threads			
•Available with Bias Cut Gasket Only									

DUCTILE IRON, C900, CAST IRON, CLAMPS

QUICK REFERENCE BY PIPE TYPE

DUCTILE IRON / C900 / CAST IRON QUICK GUIDE

BELL JOINT REPAIR CLAMP*DRESSER ULTRA SLEEVE*

One Sleeve Fits All Hubs and Bells, Leaking Joints on IPS, DIP, CIP and PVC Joints, Asbestos Cement Collars. Also encapsulates old couplings, repair clamps and other old leaking repair devices. Nearly all pipe diameters are covered by one sleeve in the 4" to 12" diameters while providing up to 1.3" of range and 4 degrees of dynamic deflection per end. Diameters covered include IPS, DIP, CIP, and AC (asbestos cement diameters including class 200).

JABO PART#	SIZE	OD
074-58555	2"	2.35-3.13
074-58556	4"	4.45-5.61
074-58560	6"	6.55-7.65
074-58564	8"	8.54-9.84
074-58568	10"	10.64-11.46
074-58570	10"	11.34-12.16
074-58572	12"	12.62-13.56
074-58574	12"	13.42-14.45

WILL ENCAPSULATES MOST REPAIR CLAMPS INCLUDING HYMAX

SAVES TIME AND MONEY BY NOT HAVING TO SHUT WATER OFF TO MAKE THE REPAIR

PIT CAST REPAIR CLAMPS

QUICK REFERENCE GUIDE



PIT CAST

QUICK REFERENCE BY PIPE TYPE

PIT CAST QUICK GUIDE



SMITH BLAIR 226 FOR PIT CAST PIPE

SIZE (INCHES)	OD RANGE (INCHES)	ACTUAL OD PIT CAST	SIZE (INCHES) W/ LOW ALLOY BOLTS & NUTS						
			7.5	10	12.5	15	20	24	30
3	3.73-4.00	3.96	*	*	*	*			
4	4.74-5.14	5.00				073-01870	073-01878	*	*
6	6.84-7.24	7.10	073-02122	073-02130	073-02138	073-02146	073-02154	*	*
8	8.99-9.39	9.30	073-02402	073-02410	073-02418	073-02426	073-02434	*	*
	9.27-9.67		073-02458	073-02466	073-02474	073-02482	073-02490	*	*
10	11.04-11.44	11.40	073-02622	073-02630	073-02638	073-02646	073-02654	*	*
	11.34-11.74		073-02678	073-02686	073-02694	073-02702	073-02710	*	*
12	13.10-13.50	13.50	073-02902	073-02910	073-02918	073-02926	073-02934	*	*
	13.40-13.80								

*NON STOCK CALL JABO SUPPLY



SMITH BLAIR 261 FOR PIT CAST PIPE

SIZE (INCHES)	OD RANGE (INCHES)	ACTUAL OD PITCAST	SIZE (INCHES) W/ LOW ALLOY BOLTS & NUTS						
			7.5	10	12.5	15	20	24	30
3-1/2	3.73-4.00	3.96	*	*	*	*	NA	NA	NA
4-1/2	4.74-5.14	5.00	073-09326	*	*	*	*	NA	NA
6	6.84-7.24	7.10	073-09426	*	073-09434	*	*	*	*
	7.05-7.45		073-09400	*	*	*	*	*	*
8	8.99-9.39	9.30	073-09562	*	073-09570	*	*	*	*
	9.27-9.67		*	*	*	*	*	*	*
10	11.04-11.44	11.40	*	*	073-09682	*	*	*	*
	11.34-11.74		*	*	*	*	*	*	*
12	13.10-13.50	13.50	*	*	*	*	*	*	*
	13.40-13.80		*	*	*	*	*	*	*

*NON STOCK CALL JABO SUPPLY

PIT CAST

QUICK REFERENCE BY PIPE TYPE

PIT CAST QUICK GUIDE



DRESSER WIDE RANGE FITS IPS- AC 100

SIZE	OD RANGE	IPS	SIZE (INCHES) W/ LOW ALLOY BOLTS & NUTS					
(INCHES)	(INCHES)	OD	7.5	10	12	15	20	24
4	4.45-5.13	4.50	074-54192	*	074-54456	074-55244	*	074-56028
6	6.55-7.42	6.63	074-54260	*	074-54652	074-55432	*	*
8	8.54-9.44	8.63	074-54300	*	074-54772	074-55560	074-55996	074-56064
10	10.64-11.46	10.75	*	*	074-54896	074-55684	*	*
12	12.62-13.56	12.75	*	*	074-55016	074-55808	*	*

***NON STOCK CALL JABO SUPPLY**

AC TRANSITE PIPE

AC TRANSITE REPAIR CLAMPS

QUICK REFERENCE GUIDE

IF TYPE OF PIPE IS KNOWN



AC TRANSITE PIPE

QUICK REFERENCE BY PIPE TYPE

ASBESTOS CEMENT TRANSITE MACHINE END 100



226 AC TRANSITE MACHINE END 100

SIZE (INCHES)	OD RANGE (INCHES)	AC TRANSITE ME 100	SIZE (INCHES) W / LOW ALLOY BOLTS & NUTS					
			7.5	10	12.5	15	20	24
4	4.45-4.73	4.64	073-01814	073-01822	073-01830	073-01838	NA	NA
6	6.56-6.96	6.91	073-02066	073-02074	073-02082	073-02090	073-02098	*
8	8.99-9.39	9.11	073-02402	073-02410	073-02418	073-02426	073-02434	*
10	11.04-11.44	11.24	073-02622	073-02630	073-02638	073-02646	073-02654	*
12	13.10-13.50	13.44	073-02902	073-02910	073-02918	073-02926	073-02934	*
*NON STOCK CALL JABO								



DRESSER WIDE RANGE AC TRANSITE MACHINE END 100

SIZE (INCHES)	OD RANGE (INCHES)	AC TRANSITE ME 100	SIZE (INCHES) W/ LOW ALLOY BOLTS & NUTS					
			7.5	10	12	15	20	24
4	4.45-5.13	4.64	074-54192	*	074-54456	074-55244	*	074-56028
6	6.55-7.42	6.91	074-54260	*	074-54652	074-55432	*	*
6 os	6.84-7.65	6.91	*	*	*	*	*	*
8	8.54-9.44	9.11	074-54300	*	074-54772	074-55560	074-55996	074-56064
8 os	8.98-9.84	9.11	*	*	*	*	*	*
10	10.64-11.46	11.24	*	*	074-54896	074-55684	*	*
12	12.62-13.56	13.44	*	*	074-55016	074-55808	*	*
*NON STOCK CALL JABO						os-OVERSIZED		



261 AC TRANSITE MACHINE END 100

SIZE (INCHES)	OD RANGE (INCHES)	AC TRANSITE ME 100	SIZE (INCHES) W/ LOW ALLOY BOLTS & NUTS					
			7.5	10	12.5	15	20	24
4	4.45-4.73	4.64	073-09310	*	073-09318	*	NA	NA
6	6.56-6.96	6.91	073-09398	*	073-09406	*	*	*
8	8.99-9.39	9.11	073-09562	*	073-09570	*	*	*
10	11.04-11.44	11.24	*	*	073-09682	*	*	*
12	13.10-13.50	13.44	*	*	*	*	*	*
*NON STOCK CALL JABO			<i>JABO SUPPLY</i>			<i>SINCE 1964</i>		

AC TRANSITE PIPE

QUICK REFERENCE BY PIPE TYPE

ASBESTOS CEMENT TRANSITE MACHINE END 150



226 AC TRANSITE MACHINE END 150

SIZE (INCHES)	OD RANGE (INCHES)	AC TRANSITE ME 150	SIZE (INCHES) W/ LOW ALLOY BOLTS & NUTS					
			7.5	10	12.5	15	20	24
4	4.74-5.14	4.81	*	*	*	073-01870	073-01878	*
6	6.56-6.96	6.91	073-02066	073-02074	073-02082	073-02090	073-02098	*
8	8.99-9.39	9.11	073-02402	073-02410	073-02418	073-02426	073-02434	*
10	11.34-11.74	11.66	073-02678	073-02686	073-02694	073-02702	073-02710	*
12	13.40-13.80	13.92	*	*	*	*	*	*
12	13.70-14.10	13.92	073-03014	073-03022	073-03030	073-03038	073-03046	073-03054
*NON STOCK CALL JABO						<i>SINCE 1964</i>		



DRESSER WIDE RANGE AC TRANSITE MACHINE END 150

SIZE (INCHES)	OD RANGE (INCHES)	AC TRANSITE ME 150	SIZE (INCHES) W/ LOW ALLOY BOLTS & NUTS					
			7.5	10	12	15	20	24
4	4.45-5.13	4.81	074-54192	*	074-54456	074-55244	*	074-56028
6	6.55-7.42	6.91	074-54260	*	074-54652	074-55432	*	*
6 os	6.84-7.65	6.91	*	*	*	*	*	*
8	8.54-9.44	9.11	074-54300	*	074-54772	074-55560	074-55996	074-56064
8 os	8.98-9.84	9.11	*	*	*	*	*	*
10 os	11.34-12.16	11.66	*	*	*	*	*	*
12 os	13.65-14.42	13.92	*	*	*	*	*	*
*NON STOCK CALL JABO						os-OVERSIZED		



261 AC TRANSITE MACHINE END 150

SIZE (INCHES)	OD RANGE (INCHES)	AC TRANSITE ME 150	SIZE (INCHES) W/ LOW ALLOY BOLTS & NUTS					
			7.5	10	12	15	20	24
4	4.74-5.14	4.81	073-09326	*	*	*	*	NA
6	6.56-6.96	6.91	073-09398	*	073-09406	*	*	*
8	8.99-9.39	9.11	073-09562	*	073-09570	*	*	*
10	11.34-11.74	11.66	*	*	*	*	*	*
12**	13.40-13.80	13.92	*	*	*	*	*	*
<i>SINCE 1964</i>			** NOT AVAILABLE IN 261 SEE 226 OR WIDE RANGE				*NON STOCK CALL JABO	

AC TRANSITE PIPE

QUICK REFERENCE BY PIPE TYPE

ASBESTOS CEMENT TRANSITE MACHINE END 200



226 AC TRANSITE MACHINE END 200

SIZE (INCHES)	OD RANGE (INCHES)	AC TRANSITE ME 200	SIZE (INCHES) W/ LOW ALLOY BOLTS & NUTS					
			7.5	10	12.5	15	20	24
4	4.74-5.14	4.81	*	*	*	073-01870	073-01878	*
6	6.56-6.96	6.91	073-02066	073-02074	073-02082	073-02090	073-02098	*
8	8.99-9.39	9.11	073-02402	073-02410	073-02418	073-02426	073-02434	*
10	11.34-11.74	11.66	073-02678	073-02686	073-02694	073-02702	073-02710	*
12	13.70-14.10	13.92	073-03014	073-03022	073-03030	073-03038	073-03046	073-03054
*NON STOCK CALL JABO						<i>SINCE 1964</i>		



DRESSER WIDE RANGE AC TRANSITE MACHINE END 200

SIZE (INCHES)	OD RANGE (INCHES)	AC TRANSITE ME 200	SIZE (INCHES) W/ LOW ALLOY BOLTS & NUTS					
			7.5	10	12	15	20	24
4	4.45-5.13	4.81	074-54192	*	074-54456	074-55244	*	074-56028
6	6.55-7.42	6.91	074-54260	*	074-54652	074-55432	*	*
6 os	6.84-7.65	6.91	*	*	*	*	*	*
8	8.54-9.44	9.11	074-54300	*	074-54772	074-55560	074-55996	074-56064
8 os	8.98-9.84	9.11	*	*	*	*	*	*
10 os	11.34-12.16	11.66	*	*	*	*	*	*
12 os	13.65-14.42	13.92	*	*	*	*	*	*
*NON STOCK CALL JABO						os-OVERSIZED		



261 AC TRANSITE MACHINE END 200

SIZE (INCHES)	OD RANGE (INCHES)	AC TRANSITE ME 200	SIZE (INCHES) W/ LOW ALLOY BOLTS & NUTS					
			7.5	10	12.5	15	20	24
4	4.74-5.14	4.81	073-09326	*	*	*	*	NA
6	6.56-6.96	6.91	073-09398	*	073-09406	*	*	*
8	8.99-9.39	9.11	073-09562	*	073-09570	*	*	*
10	11.34-11.74	11.66	*	*	*	*	*	*
**12	13.40-13.80	13.92	*	*	*	*	*	*
*NON STOCK CALL JABO			** NOT AVAILABLE IN 261 SEE 226 OR WIDE RANGE					

JABO SUPPLY SINCE 1964 SERVICE IS MORE THAN A PROMISE

AC TRANSITE PIPE

QUICK REFERENCE BY PIPE TYPE

ASBESTOS CEMENT TRANSITE ROUGH BARRELL 100



226 AC TRANSITE ROUGH BARRELL (RB) 100

SIZE (INCHES)	OD RANGE (INCHES)	AC TRANSITE RB MIN-MAX 100	SIZE (INCHES) W/ LOW ALLOY BOLTS & NUTS					
			7.5	10	12.5	15	20	24
4	4.74-5.14	4.79-5.14				073-01870	073-01878	*
6	7.05-7.45	7.05-7.40	073-02178	073-02186	073-02194	073-02202	073-02210	
8	9.27-9.67	9.22-9.57	073-02458	073-02466	073-02474	073-02482	073-02490	*
10	11.34-11.74	11.42-11.77	073-02678	073-02686	073-02694	073-02702	073-02710	*
12	13.70-14.10	13.69-14.04	073-03014	073-03022	073-03030	073-03038	073-03046	073-03054
*NON STOCK CALL JABO						<i>SINCE 1964</i>		



DRESSER WIDE RANGE AC TRANSITE ROUGH BARRELL (RB) 100

SIZE (INCHES)	OD RANGE (INCHES)	AC TRANSITE RB MIN-MAX 100	SIZE (INCHES) W/ LOW ALLOY BOLTS & NUTS					
			7.5	10	12	15	20	24
4	4.45-5.13	4.79-5.14	074-54192	*	074-54456	074-55244	*	074-56028
4 os	4.74-5.61	4.79-5.14	*	*	*	*	*	*
6 os	6.84-7.65	7.05-7.40	*	*	*	*	*	*
8 os	8.98-9.84	9.22-9.57	*	*	*	*	*	*
10 os	11.34-12.16	11.22-11.77	*	*	*	*	*	*
12 os	13.65-14.42	13.69-14.04	*	*	*	*	*	*
*NON STOCK CALL JABO						os-OVERSIZED		



261 AC TRANSITE ROUGH BARRELL (RB) 100

SIZE (INCHES)	OD RANGE (INCHES)	AC TRANSITE RB MIN-MAX 100	SIZE (INCHES) W/ LOW ALLOY BOLTS & NUTS					
			7.5	10	12.5	15	20	24
4	4.74-5.14	4.79-5.14	073-09326	*	*	*	*	NA
6	6.84-7.24	7.05-7.40	073-09426	*	073-09434	*	*	*
8	9.27-9.67	9.22-9.57	*	*	*	*	*	*
10	11.34-11.74	11.42-11.77	*	*	*	*	*	*
12	13.40-13.80	13.69-14.04	*	*	*	*	*	*
<i>SINCE 1964</i>			*NON STOCK CALL JABO			ACTUAL OD OF PIPE		

JABO SUPPLY SINCE 1964 SERVICE IS MORE THAN A PROMISE

AC TRANSITE PIPE

QUICK REFERENCE BY PIPE TYPE

ASBESTOS CEMENT TRANSITE ROUGH BARRELL 150



226 AC TRANSITE ROUGH BARRELL (RB) 150

SIZE (INCHES)	OD RANGE (INCHES)	AC TRANSITE RB 150	SIZE (INCHES) W/ LOW ALLOY BOLTS & NUTS					
			7.5	10	12.5	15	20	24
4	4.95-5.35	4.97-5.27	073-01902	073-01910	073-01918	073-01926	073-01934	*
6	7.05-7.45	7.07-7.37	073-02178	073-02186	073-02194	073-02202	073-02210	*
8	9.27-9.67	9.27-9.57	073-02458	073-02466	073-02474	073-02482	073-02490	*
10	11.75-12.15	11.82-12.12	073-02734	073-02742	073-02750	073-02758	073-02766	*
12	14.00-14.40	14.08-14.38	073-03074	073-03082	073-03090	073-03098	073-03106	*
*NON STOCK CALL JABO						SINCE 1964		



DRESSER WIDE RANGE AC TRANSITE ROUGH BARRELL (RB) 150

SIZE (INCHES)	OD RANGE (INCHES)	AC TRANSITE RB 150	SIZE (INCHES) W/ LOW ALLOY BOLTS & NUTS					
			7.5	10	12	15	20	24
4 OS	4.74-5.61	4.97-5.27	*	*	*	*	*	*
6 OS	6.84-7.65	7.07-7.37	*	*	*	*	*	*
8 OS	8.98-9.84	9.27-9.57	*	*	*	*	*	*
10 OS	11.34-12.16	11.82-12.12	*	*	*	*	*	*
12 OS	13.65-14.42	14.08-14.38	*	*	*	*	*	*
*NON STOCK CALL JABO						SINCE 1964		



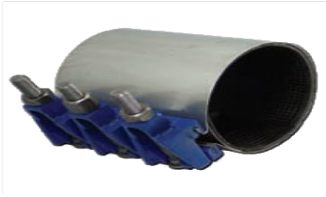
261 AC TRANSITE ROUGH BARRELL (RB) 150

SIZE (INCHES)	OD RANGE (INCHES)	AC TRANSITE RB MIN-MAX 100	SIZE (INCHES) W/ LOW ALLOY BOLTS & NUTS					
			7.5	10	12.5	15	20	24
4	4.74-5.14	4.79-5.14	073-09326	*	*	*	*	NA
6	6.84-7.24	7.05-7.40	073-09426	*	073-09434	*	*	*
8	9.27-9.67	9.22-9.57	*	*	*	*	*	*
10	11.34-11.74	11.42-11.77	*	*	*	*	*	*
12	13.40-13.80	13.69-14.04	*	*	*	*	*	*
*NON STOCK CALL JABO			CHECK ACTUAL OD OF PIPE				SINCE 1964	

AC TRANSITE PIPE

QUICK REFERENCE BY PIPE TYPE

ASBESTOS CEMENT TRANSITE ROUGH BARRELL 150



226 AC TRANSITE ROUGH BARRELL (RB) 200

SIZE (INCHES)	OD RANGE (INCHES)	AC TRANSITE RB 200	SIZE (INCHES) W/ LOW ALLOY BOLTS & NUTS					
			7.5	10	12.5	15	20	24
4	5.22-5.62	5.22-5.77	*	*	*	*	*	*
6	7.45-7.85	7.26-7.56	*	*	*	*	*	*
8	9.70-10.10	9.39-9.74	*	*	*	*	*	*
10	11.75-12.15	11.77-12.12	073-02734	073-02742	073-02750	073-02758	073-02766	*
12	14.00-14.40	14.03-14.38	073-03074	073-03082	073-03090	073-03098	073-03106	*
*NON STOCK CALL JABO						<i>SINCE 1964</i>		



DRESSER WIDE RANGE AC TRANSITE ROUGH BARRELL (RB) 200

SIZE (INCHES)	OD RANGE (INCHES)	AC TRANSITE RB 200	SIZE (INCHES) W/ LOW ALLOY BOLTS & NUTS					
			7.5	10	12	15	20	24
4 os	4.74-5.61	5.22-5.77	*	*	*	*	*	*
6 os	6.84-7.65	7.26-7.56	*	*	*	*	*	*
8 os	8.98-9.84	9.39-9.74	*	*	*	*	*	*
10 os	11.34-12.16	11.77-12.12	*	*	*	*	*	*
12 os	13.65-14.42	14.03-14.38	*	*	*	*	*	*
*NON STOCK CALL JABO						os-OVERSIZED		



261 AC TRANSITE ROUGH BARRELL (RB) 200

SIZE (INCHES)	OD RANGE (INCHES)	AC TRANSITE RB 200	SIZE (INCHES) W/ LOW ALLOY BOLTS & NUTS					
			7.5	10	12	15	20	24
4	4.95-5.35	5.22-5.77	*	*	*	*	*	NA
6	7.05-7.45	7.26-7.56	073-09400	*	*	*	*	*
8	9.27-9.67	9.39-9.74	*	*	*	*	*	*
10	11.75-12.15	11.77-12.12	*	*	*	*	*	*
*NON STOCK CALL JABO			CHECK ACTUAL OD OF PIPE					

AC SIMPLEX PIPE REPAIR CLAMPS

QUICK REFERENCE GUIDE

IF TYPE OF PIPE IS KNOWN



AC SIMPLEX PIPE

QUICK REFERENCE BY PIPE TYPE

ASBESTOS CEMENT SIMPLEX MACHINE END 100



226 AC SIMPLEX MACHINE END 100

SIZE (INCHES)	OD RANGE (INCHES)	AC SIMPLEX <i>ME 100</i>	SIZE (INCHES) W/ LOW ALLOY BOLTS & NUTS					
			7.5	10	12.5	15	20	24
4	4.45-4.73	4.7	073-01814	073-01822	073-01830	073-01838	NA	NA
6	6.56-6.96	6.76	073-02066	073-02074	073-02082	073-02090	073-02098	*
8	8.99-9.39	8.88	073-02402	073-02410	073-02418	073-02426	073-02434	*
10	11.04-11.44	11.18	073-02622	073-02630	073-02638	073-02646	073-02654	*
12	13.10-13.50	13.36	073-02902	073-02910	073-02918	073-02926	073-02934	*
*NON STOCK CALL JABO						os-OVERSIZED		



DRESSER WIDE RANGE AC SIMPLEX MACHINE END 100

SIZE (INCHES)	OD RANGE (INCHES)	AC SIMPLEX <i>ME 100</i>	SIZE (INCHES) W/ LOW ALLOY BOLTS & NUTS					
			7.5	10	12	15	20	24
4	4.45-5.13	4.7	074-54192	*	074-54456	074-55244	*	074-56028
6	6.55-7.42	6.76	074-54260	*	074-54652	074-55432	*	*
8	8.54-9.44	8.88	074-54300	*	074-54772	074-55560	074-55996	074-56064
10	10.64-11.46	11.18	*	*	074-54896	074-55684	*	*
12	12.62-13.56	13.36	*	*	074-55016	074-55808	*	*
*NON STOCK CALL JABO								



261 AC SIMPLEX MACHINE END 100

SIZE (INCHES)	OD RANGE (INCHES)	AC SIMPLEX <i>ME 100</i>	SIZE (INCHES) W/ LOW ALLOY BOLTS & NUTS					
			7.5	10	12.5	15	20	24
4	4.45-4.73	4.64	073-09310	*	073-09318	*	NA	NA
6	6.56-6.96	6.91	073-09398	*	073-09406	*	*	*
8	8.54-8.94	9.11	073-09534	*	073-09542	*	*	*
10	11.04-11.44	11.24	*	*	073-09682	*	*	*
12	13.10-13.50	13.44	*	*	*	*	*	*
<i>JABO SUPPLY SINCE 1964</i>			*NON STOCK CALL JABO					

AC SIMPLEX PIPE

QUICK REFERENCE BY PIPE TYPE

ASBESTOS CEMENT SIMPLEX MACHINE END 150



226 AC SIMPLEX MACHINE END 150

SIZE (INCHES)	OD RANGE (INCHES)	AC SIMPLEX ME 150	SIZE (INCHES) W/ LOW ALLOY BOLTS & NUTS					
			7.5	10	12.5	15	20	24
4	4.74-5.14	4.85				073-01870	073-01878	*
6	6.56-6.96	6.95	073-02066	073-02074	073-02082	073-02090	073-02098	*
8	8.99-9.39	9.15	073-02402	073-02410	073-02418	073-02426	073-02434	*
10	11.34-11.74	11.7	073-02678	073-02686	073-02694	073-02702	073-02710	*
12	13.70-14.10	13.96	073-03014	073-03022	073-03030	073-03038	073-03046	073-03054

***NON STOCK CALL JABO**



DRESSER WIDE RANGE AC SIMPLEX MACHINE END 150

SIZE (INCHES)	OD RANGE (INCHES)	AC SIMPLEX ME 150	SIZE (INCHES) W/ LOW ALLOY BOLTS & NUTS					
			7.5	10	12	15	20	24
4	4.45-5.13	4.85	074-54192	*	074-54456	074-55244	*	074-56028
4 os	4.74-5.61	4.85	*	*	*	*	*	*
6	6.55-7.42	6.95	074-54260	*	074-54652	074-55432	*	*
6 os	6.84-7.65	6.95	*	*	*	*	*	*
8	8.54-9.44	9.15	074-54300	*	074-54772	074-55560	074-55996	074-56064
8 os	8.98-9.84	9.15	*	*	*	*	*	*
10 os	11.34-12.16	11.7	*	*	*	*	*	*
12 os	13.65-14.42	13.96	*	*	*	*	*	*

***NON STOCK CALL JABO**

os-OVERSIZED



261 AC SIMPLEX MACHINE END 150

SIZE (INCHES)	OD RANGE (INCHES)	AC SIMPLEX ME 150	SIZE (INCHES) W/ LOW ALLOY BOLTS & NUTS					
			7.5	10	12	15	20	24
4	4.74-5.14	4.85	073-09326	*	*	*	*	NA
6	6.56-6.96	6.95	073-09398	*	073-09406	*	*	*
8	8.99-9.39	9.15	073-09562	*	073-09570	*	*	*
10	11.34-11.74	11.7	*	*	*	*	*	*
12	NA	13.96						

JABO SUPPLY SINCE 1964

***NON STOCK CALL JABO**

AC SIMPLEX PIPE

QUICK REFERENCE BY PIPE TYPE

ASBESTOS CEMENT SIMPLEX MACHINE END 200



226 AC SIMPLEX MACHINE END 200

SIZE (INCHES)	OD RANGE (INCHES)	AC SIMPLEX ME 200	SIZE (INCHES) W/ LOW ALLOY BOLTS & NUTS					
			7.5	10	12.5	15	20	24
4	4.95-5.35	5.20	073-01902	073-01910	073-01918	073-01926	073-01934	*
6	7.45-7.85	7.50	*	*	*	*	*	*
8	9.70-10.10	9.76	*	*	*	*	*	*
10	12.00-12.40	11.20	*	*	*	*	*	*
12	NA	14.46	NA	NA	NA	NA	NA	NA

***NON STOCK CALL JABO**



DRESSER WIDE RANGE AC SIMPLEX MACHINE END 200

SIZE (INCHES)	OD RANGE (INCHES)	AC SIMPLEX ME 200	SIZE (INCHES) W/ LOW ALLOY BOLTS & NUTS					
			7.5	10	12	15	20	24
4 OS	4.74-5.61	5.2	*	*	*	*	*	*
6 OS	6.84-7.65	7.5	*	*	*	*	*	*
8 OS	8.98-9.84	9.76	*	*	*	*	*	*
12 OS	13.65-14.42	14.46	*	*	*	*	*	*

***NON STOCK CALL JABO**



261 AC SIMPLEX MACHINE END 200

SIZE (INCHES)	OD RANGE (INCHES)	AC SIMPLEX ME 200	SIZE (INCHES) W/ LOW ALLOY BOLTS & NUTS					
			7.5	10	12.5	15	20	24
4	4.95-5.35	5.2	*	*	*	*	*	*
6	7.45-7.85	7.5	*	*	*	*	*	*
8	9.70-10.10	9.76	*	*	*	*	*	*
10	12.00-12.40	12.2	*	*	*	*	*	*
12	NA	14.46	*	*	*	*	*	*

JABO SUPPLY SINCE 1964

***NON STOCK CALL JABO**

AC SIMPLEX PIPE

QUICK REFERENCE BY PIPE TYPE

ASBESTOS CEMENT SIMPLEX ROUGH BARRELL 100



226 AC SIMPLEX ROUGH BARRELL (RB) 100

SIZE (INCHES)	OD RANGE (INCHES)	AC SIMPLEX RB MIN-MAX 100	SIZE (INCHES) W/ LOW ALLOY BOLTS & NUTS					
			7.5	10	12.5	15	20	24
4	4.74-5.14	4.95	*	*	*	073-01870	073-01878	*
6	6.84-7.24	7.01	073-02122	073-02130	073-02138	073-02146	073-02154	*
8	8.99-9.39	9.13	073-02402	073-02410	073-02418	073-02426	073-02434	*
10	11.04-11.44	11.43	073-02622	073-02630	073-02638	073-02646	073-02654	*
12	13.40-13.80	13.61	*	*	*	*	*	*
*NON STOCK CALL JABO								



DRESSER WIDE RANGE AC SIMPLEX ROUGH BARRELL (RB) 100

SIZE (INCHES)	OD RANGE (INCHES)	AC SIMPLEX RB MIN-MAX 100	SIZE (INCHES) W/ LOW ALLOY BOLTS & NUTS					
			7.5	10	12	15	20	24
4	4.45-5.13	4.95	074-54192	*	074-54456	074-55244	*	074-56028
4 os	4.74-5.61	4.95	*	*	*	*	*	*
6	6.55-7.42	7.01	074-54260	*	074-54652	074-55432	*	*
6 os	6.84-7.65	7.01	*	*	*	*	*	*
8	8.54-9.44	9.13	074-54300	*	074-54772	074-55560	074-55996	074-56064
8 os	8.98-9.84	9.13	*	*	*	*	*	*
10	10.64-11.46	11.43	*	*	074-54896	074-55684	*	*
10 os	11.34-12.16	11.43	*	*	*	*	*	*
12 os	13.65-14.42	13.61	*	*	*	*	*	*
*NON STOCK CALL JABO						os-OVERSIZED		



261 AC SIMPLEX ROUGH BARRELL (RB) 100

SIZE (INCHES)	OD RANGE (INCHES)	AC SIMPLEX RB MIN-MAX 100	SIZE (INCHES) W/ LOW ALLOY BOLTS & NUTS					
			7.5	10	12.5	15	20	24
4	4.74-5.14	4.95	073-09326	*	*	*	*	NA
6	6.84-7.24	7.01	073-09426	*	073-09434	*	*	*
8	8.99	9.39	073-09562	*	073-09570	*	*	*
10	11.04-11.44	11.43	*	*	073-09682	*	*	*
	11.34-11.74	11.43	*	*	*	*	*	*
12	13.40-13.80	13.61	*	*	*	*	*	*
<i>JABO SUPPLY SINCE 1964</i>			*NON STOCK CALL JABO					

AC SIMPLEX PIPE

QUICK REFERENCE BY PIPE TYPE

ASBESTOS CEMENT SIMPLEX ROUGH BARRELL 150



226 ACSIMPLEX ROUGH BARRELL (RB) 150

SIZE (INCHES)	OD RANGE (INCHES)	AC SIMPLEX RB 150	SIZE (INCHES) W/ LOW ALLOY BOLTS & NUTS					
			7.5	10	12.5	15	20	24
4	4.74-5.14	5.1				073-01870	073-01878	*
6	7.05-7.45	7.2	073-02178	073-02186	073-02194	073-02202	073-02210	
8	9.27-9.67	9.4	073-02458	073-02466	073-02474	073-02482	073-02490	*
10	11.75-12.15	11.95	073-02734	073-02742	073-02750	073-02758	073-02766	*
12	14.00-14.40	14.21	073-03074	073-03082	073-03090	073-03098	073-03106	

***NON STOCK CALL JABO**



DRESSER WIDE RANGE AC SIMPLEX ROUGH BARRELL (RB) 150

SIZE (INCHES)	OD RANGE (INCHES)	AC SIMPLEX RB 150	SIZE (INCHES) W/ LOW ALLOY BOLTS & NUTS					
			7.5	10	12	15	20	24
4	4.45-5.13	5.1	074-54192	*	074-54456	074-55244	*	074-56028
4 OS	4.74-5.61	5.1	*	*	*	*	*	*
6	6.55-7.42	7.2	074-54260	*	074-54652	074-55432	*	*
6 OS	6.84-7.65	7.2	*	*	*	*	*	*
8	8.54-9.44	9.4	074-54300	*	074-54772	074-55560	074-55996	074-56064
8 OS	8.98-9.84	9.4	*	*	*	*	*	*
10 OS	11.34-12.16	11.95	*	*	*	*	*	*
12 OS	13.65-14.42	14.21	*	*	*	*	*	*

***NON STOCK CALL JABO**



261 AC SIMPLEX ROUGH BARRELL (RB) 150

SIZE (INCHES)	OD RANGE (INCHES)	AC SIMPLEX RB MIN-MAX 100	SIZE (INCHES) W/ LOW ALLOY BOLTS & NUTS					
			7.5	10	12.5	15	20	24
4	4.74-5.14	5.1	073-09326	*	*	*	*	NA
6	6.84-7.24	7.2	073-09426	*	073-09434	*	*	*
6	7.05-7.45	7.2	073-09400	*	*	*	*	*
8	9.27-9.67	9.4	*	*	*	*	*	*
10	11.75-12.15	11.95	*	*	*	*	*	*
12	NA	14.21	NA	NA	NA	NA	NA	NA

JABO SUPPLY SINCE 1964

***NON STOCK CALL JABO**

AC SIMPLEX PIPE

QUICK REFERENCE BY PIPE TYPE

ASBESTOS CEMENT SIMPLEX ROUGH BARRELL 200



226 AC TRANSITE ROUGH BARRELL (RB) 200

SIZE (INCHES)	OD RANGE (INCHES)	AC SIMPLEX RB 200	SIZE (INCHES) W/ LOW ALLOY BOLTS & NUTS					
			7.5	10	12.5	15	20	24
4	5.22-5.62	5.45	*	*	*	*	*	*
6	7.45-7.85	7.75	*	*	*	*	*	*
8	9.70-10.10	10.01	*	*	*	*	*	*
10	12.00-12.40	12.45	*	*	*	*	*	*
*NON STOCK CALL JABO								



DRESSER WIDE RANGE AC TRANSITE ROUGH BARRELL (RB) 200

SIZE (INCHES)	OD RANGE (INCHES)	AC SIMPLEX RB 200	SIZE (INCHES) W/ LOW ALLOY BOLTS & NUTS					
			7.5	10	12	15	20	24
4 OS	4.74-5.61	5.45	*	*	*	*	*	*
6 OS	6.84-7.65	7.75	*	*	*	*	*	*
8 OS	8.98-9.84	10.01	NA	NA	NA	NA	NA	NA
10 OS	11.34-12.16	12.45	NA	NA	NA	NA	NA	NA
12 OS	13.65-14.42	14.72	NA	NA	NA	NA	NA	NA
*NON STOCK CALL JABO						CHECK ACTUAL PIPE SIZE		

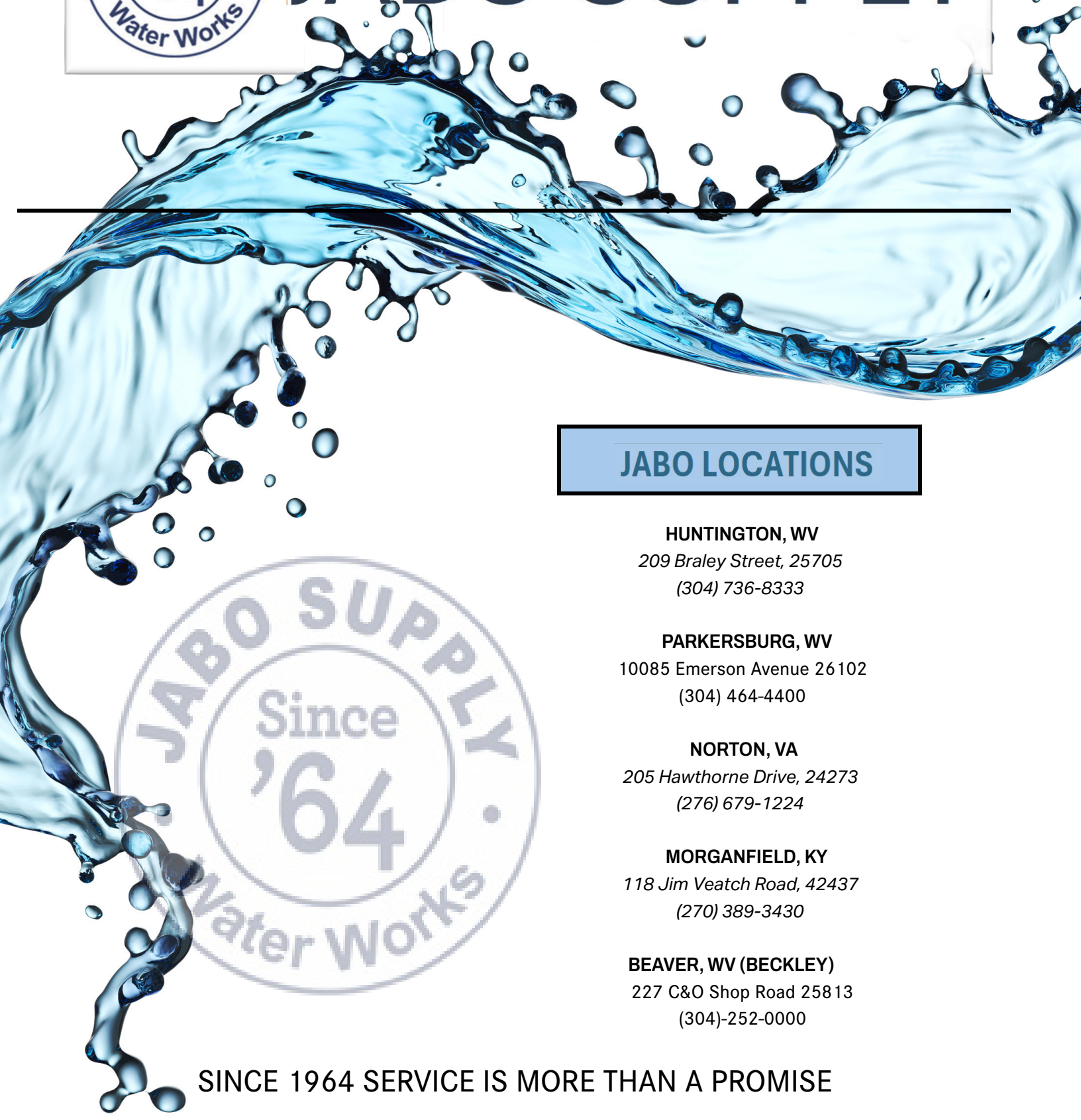


261 AC TRANSITE ROUGH BARRELL (RB) 200

SIZE (INCHES)	OD RANGE (INCHES)	AC SIMPLEX RB 200	SIZE (INCHES) W/ LOW ALLOY BOLTS & NUTS					
			7.5	10	12	15	20	24
4	5.22-5.62	5.45	*	*	073-09340	*	*	NA
6	7.45-7.85	7.75	*	*	*	*	*	*
8	9.70-10.10	10.01	*	*	*	*	*	*
10	12.62-13.02	12.45	*	*	*	*	*	*
12	NA	14.72	NA	NA	NA	NA	NA	NA
JABO SUPPLY SINCE 1964			*NON STOCK CALL JABO			NO 261 AVAILABLE		



JABO SUPPLY



JABO LOCATIONS

HUNTINGTON, WV

209 Braley Street, 25705
(304) 736-8333

PARKERSBURG, WV

10085 Emerson Avenue 26102
(304) 464-4400

NORTON, VA

205 Hawthorne Drive, 24273
(276) 679-1224

MORGANFIELD, KY

118 Jim Veatch Road, 42437
(270) 389-3430

BEAVER, WV (BECKLEY)

227 C&O Shop Road 25813
(304)-252-0000

SINCE 1964 SERVICE IS MORE THAN A PROMISE